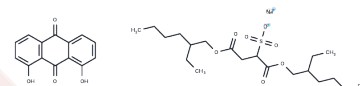


Solven

Chemical Properties

CAS No. : 8059-64-1
 Formula: C₃₄H₄₅NaO₁₁S
 Molecular Weight: 684.77
 Storage: Powder: -20°C for 3 years | In solvent: -80°C for 1 year
 Actual storage temperature shall be subject to the COA.



Biological Description

Description	Solven is a bioactive chemical.
Targets(IC50)	Others

Preparing Stock Solutions

	1mg	5mg	10mg
1 mM	1.4603 mL	7.3017 mL	14.6034 mL
5 mM	0.2921 mL	1.4603 mL	2.9207 mL
10 mM	0.146 mL	0.7302 mL	1.4603 mL
50 mM	0.0292 mL	0.146 mL	0.2921 mL

Please select the appropriate solvent to prepare the stock solution, according to the solubility of the product in different solvents. Please use it as soon as possible.

Note: The dilution table applies only to solid products. For liquid products, please calculate the stock solution based on the stated concentration and/or density.

Reference

- Muhammad Sarfraz R, Bashir S, Mahmood A, Ahsan H, Riaz H, Raza H, Rashid Z, Atif Raza S, Asad Abrar M, Abbas K, Yasmeen T. APPLICATION OF VARIOUS POLYMERS AND POLYMERS BASED TECHNIQUES USED TO IMPROVE SOLUBILITY OF POORLY WATER SOLUBLE DRUGS: A REVIEW. Acta Pol Pharm. 2017 Mar;74(2):347-356. Review. PubMed PMID: 29624239.
- Zhang L, Wen Y, He T, Wang M, Xu P. [Determination of residual cyclohexanone in disposable infusion set by gas chromatography]. Zhongguo Yi Liao Qi Xie Za Zhi. 2014 Sep;38(5):381-2, 385. Chinese. PubMed PMID: 25597092.
- Xu C, Ye Z, Li D, Zhou D, Shui W. [Study on technology in preparation of Fructus Auranti extract]. Zhongguo Zhong Yao Za Zhi. 2011 Nov;36(21):2971-4. Chinese. PubMed PMID: 22308686.
- Horisawa E, Kubota K, Tuboi I, Sato K, Yamamoto H, Takeuchi H, Kawashima Y. Size-dependency of DL-lactide/glycolide copolymer particulates for intra-articular delivery system on phagocytosis in rat synovium. Pharm Res. 2002 Feb;19(2):132-9. PubMed PMID: 11883639.

Inhibitor · Natural Compounds · Compound Libraries · Recombinant Proteins

This product is for Research Use Only · Not for Human or Veterinary or Therapeutic Use

Tel:781-999-4286 E_mail:info@targetmol.com Address:34 Washington Street,Wellesley Hills,MA 02481