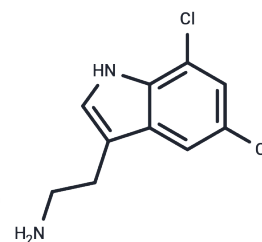


2-(5,7-dichloro-1H-indol-3-yl)ethan-1-amine

Chemical Properties

CAS No. :	2447-23-6
Formula:	C ₁₀ H ₁₀ Cl ₂ N ₂
Molecular Weight:	229.11
Storage:	Powder: -20°C for 3 years In solvent: -80°C for 1 year Actual storage temperature shall be subject to the COA.



Biological Description

Description	2-(5,7-dichloro-1H-indol-3-yl)ethan-1-amine is an indoleamine compound that is structurally similar to serotonin. It is a selective agonist at the 5-HT _{2A} receptor and has potential applications in neuroscience.
Targets(IC ₅₀)	Others

Solubility Information

Solubility	DMSO: 4.87 mg/mL (21.26 mM), Sonication is recommended. (< 1 mg/ml refers to the product slightly soluble or insoluble)
------------	--

Preparing Stock Solutions

	1mg	5mg	10mg
1 mM	4.3647 mL	21.8236 mL	43.6472 mL
5 mM	0.8729 mL	4.3647 mL	8.7294 mL
10 mM	0.4365 mL	2.1824 mL	4.3647 mL
50 mM	0.0873 mL	0.4365 mL	0.8729 mL

Please select the appropriate solvent to prepare the stock solution, according to the solubility of the product in different solvents. Please use it as soon as possible.

Note: The dilution table applies only to solid products. For liquid products, please calculate the stock solution based on the stated concentration and/or density.

Inhibitor · Natural Compounds · Compound Libraries · Recombinant Proteins

This product is for Research Use Only · Not for Human or Veterinary or Therapeutic Use

Tel: 781-999-4286 E_mail: info@targetmol.com Address: 34 Washington Street, Wellesley Hills, MA 02481