

YM 16638

Chemical Properties

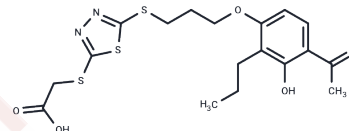
CAS No. : 104073-72-5

Formula: C₁₈H₂₂N₂O₅S₃

Molecular Weight: 442.57

Storage: Powder: -20°C for 3 years | In solvent: -80°C for 1 year

Actual storage temperature shall be subject to the COA.



Biological Description

Description	YM 16638 is an orally active leukotriene (LT) antagonist with triglyceride-lowering and peroxisome-increasing effects that can be used to study antigen-induced early and late airway responses in allergic sheep.
Targets(IC50)	LTR,Leukotriene Receptor

Preparing Stock Solutions

	1mg	5mg	10mg
1 mM	2.2595 mL	11.2976 mL	22.5953 mL
5 mM	0.4519 mL	2.2595 mL	4.5191 mL
10 mM	0.226 mL	1.1298 mL	2.2595 mL
50 mM	0.0452 mL	0.226 mL	0.4519 mL

Please select the appropriate solvent to prepare the stock solution, according to the solubility of the product in different solvents. Please use it as soon as possible.

Note: The dilution table applies only to solid products. For liquid products, please calculate the stock solution based on the stated concentration and/or density.

Reference

- Goto S, et al. Species specificity in the blood cholesterol-lowering effect of YM-16638. *Br J Pharmacol.* 1996 May; 118(1):174-8.
- Goto S, et al. Effect of the hypocholesterolemic agent YM-16638 on cholesterol biosynthesis activity and apolipoprotein B secretion in HepG2 and monkey liver. *Jpn J Pharmacol.* 1999 Jan;79(1):75-82.
- Tomioka K, et al. The effect of an orally active leukotriene (LT) antagonist YM-16638 on antigen-induced early and late airway responses in allergic sheep. *Prostaglandins Leukot Essent Fatty Acids.* 1989 Apr;36(1):43-7.
- Miyata K, et al. Gastric mucosal protection by YM638, a novel leukotriene D4 receptor antagonist, in rats. *Eur J Pharmacol.* 1995 Mar 24;276(1-2):165-75.

Inhibitor · Natural Compounds · Compound Libraries · Recombinant Proteins

This product is for Research Use Only · Not for Human or Veterinary or Therapeutic Use

Tel:781-999-4286 E_mail:info@targetmol.com Address:34 Washington Street,Wellesley Hills,MA 02481