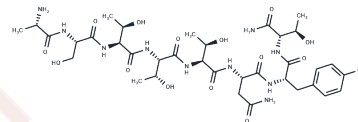


Peptide T amide

Chemical Properties

CAS No. :	113021-67-3
Formula:	C35H56N10O15
Molecular Weight:	856.888
Storage:	Keep away from moisture Powder: -20°C for 3 years In solvent: -80°C for 1 year <small>Actual storage temperature shall be subject to the COA.</small>



Biological Description

Description	Peptide T amide is an octapeptide segment of HIV envelope gp120 and is used in AIDS therapy.
-------------	--

Preparing Stock Solutions

	1mg	5mg	10mg
1 mM	1.167 mL	5.8351 mL	11.6701 mL
5 mM	0.2334 mL	1.167 mL	2.334 mL
10 mM	0.1167 mL	0.5835 mL	1.167 mL
50 mM	0.0233 mL	0.1167 mL	0.2334 mL

Please select the appropriate solvent to prepare the stock solution, according to the solubility of the product in different solvents. Please use it as soon as possible.

Note: The dilution table applies only to solid products. For liquid products, please calculate the stock solution based on the stated concentration and/or density.

Reference

- Ruff MR, Polianova M, Yang QE, Leoung GS, Ruscetti FW, Pert CB. Update on D-ala-peptide T-amide (DAPTA): a viral entry inhibitor that blocks CCR5 chemokine receptors. *Curr HIV Res.* 2003 Jan;1(1):51-67. Review. PubMed PMID: 15043212.
- Su SF, Amidon GL. Investigation into the intestinal metabolism of [D-Ala1] peptide T amide: implication for oral drug delivery. *Biochim Biophys Acta.* 1995 Aug 17;1245(1):62-8. PubMed PMID: 7654767.
- Burke TR Jr, Knight M. Counter-current chromatographic purification of [D-Ala]peptide T amide. *J Chromatogr.* 1987 Dec 18;411:431-5. PubMed PMID: 3443632.
- Barrera CM, Kastin AJ, Banks WA. D-[Ala1]-peptide T-amide is transported from blood to brain by a saturable system. *Brain Res Bull.* 1987 Dec;19(6):629-33. PubMed PMID: 3440215.

Inhibitor · Natural Compounds · Compound Libraries · Recombinant Proteins

This product is for Research Use Only · Not for Human or Veterinary or Therapeutic Use

Tel:781-999-4286 E_mail:info@targetmol.com Address:34 Washington Street,Wellesley Hills,MA 02481