

methyl 3,5-dichloro-1,4-dihydroxy-2-[(1E)-prop-1-en-1-yl]cyclopent-2-ene-1-carboxylate

Chemical Properties

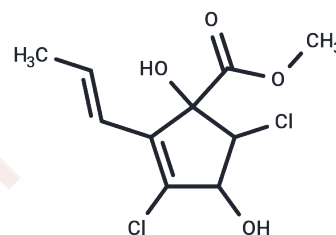
CAS No. :

Formula: C₁₀H₁₂Cl₂O₄

Molecular Weight: 267.1

Storage: Powder: -20°C for 3 years | In solvent: -80°C for 1 year

Actual storage temperature shall be subject to the COA.



Biological Description

Description	methyl 3,5-dichloro-1,4-dihydroxy-2-[(1E)-prop-1-en-1-yl]cyclopent-2-ene-1-carboxylate is a high-purity biochemical reagent suitable for biochemical experiments and drug synthesis research.
-------------	---

Preparing Stock Solutions

	1mg	5mg	10mg
1 mM	3.7439 mL	18.7196 mL	37.4392 mL
5 mM	0.7488 mL	3.7439 mL	7.4878 mL
10 mM	0.3744 mL	1.872 mL	3.7439 mL
50 mM	0.0749 mL	0.3744 mL	0.7488 mL

Please select the appropriate solvent to prepare the stock solution, according to the solubility of the product in different solvents. Please use it as soon as possible.

Note: The dilution table applies only to solid products. For liquid products, please calculate the stock solution based on the stated concentration and/or density.

Inhibitor · Natural Compounds · Compound Libraries · Recombinant Proteins

This product is for Research Use Only · Not for Human or Veterinary or Therapeutic Use

Tel:781-999-4286 E_mail:info@targetmol.com Address:34 Washington Street,Wellesley Hills,MA 02481