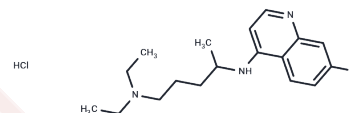


Chloroquine dihydrochloride

Chemical Properties

CAS No. : 3545-67-3
 Formula: C₁₈H₂₇Cl₂N₃
 Molecular Weight: 356.33
 Storage: Powder: -20°C for 3 years | In solvent: -80°C for 1 year
Actual storage temperature shall be subject to the COA.



Biological Description

Description	Chloroquine is a medication preventing and treating malaria in areas where malaria is known to be sensitive to its effects. It is also sometimes used for amebiasis that is occurring outside the intestines, rheumatoid arthritis, and lupus erythematosus. Chloroquine enters the red blood cell, inhibiting the parasite cell and digestive vacuole by simple diffusion.
Targets(IC50)	Others,HIV Protease,Antibiotic,Parasite,Autophagy,SARS-CoV,TLR

Preparing Stock Solutions

	1mg	5mg	10mg
1 mM	2.8064 mL	14.0319 mL	28.0639 mL
5 mM	0.5613 mL	2.8064 mL	5.6128 mL
10 mM	0.2806 mL	1.4032 mL	2.8064 mL
50 mM	0.0561 mL	0.2806 mL	0.5613 mL

Please select the appropriate solvent to prepare the stock solution, according to the solubility of the product in different solvents. Please use it as soon as possible.

Note: The dilution table applies only to solid products. For liquid products, please calculate the stock solution based on the stated concentration and/or density.

Reference

- Tong Y, Zhang G, Li Y, Xu J, Yuan J, Zhang B, Hu T, Song G. Corilagin inhibits breast cancer growth via reactive oxygen species-dependent apoptosis and autophagy. *J Cell Mol Med*. 2018 Jun 19. doi: 10.1111/jcmm.13647. [Epub ahead of print] PubMed PMID: 29923307.
- Martín-Dávila P, Norman F, Fortún-Abete J, Píris M, Lovatti R, Rubio JM, Martínez-Pérez A, Graus J, Ta G, Villarubia J, Mahillo B, López-Vélez R. Donor-derived multiorgan transmission of mixed *P. malariae* and *P. ovale* infection: Impact of globalization on post-transplant infections. *Transpl Infect Dis*. 2018 Jun 4:e12938. doi: 10.1111/tid.12938. [Epub ahead of print] PubMed PMID: 29863799.
- Long HL, Zhang FF, Wang HL, Yang WS, Hou HT, Yu JK, Liu B. Mulberry anthocyanins improves thyroid cancer progression mainly by inducing apoptosis and autophagy cell death. *Kaohsiung J Med Sci*. 2018 May;34(5):255-262. doi: 10.1016/j.kjms.2017.11.004. Epub 2017 Dec 6. PubMed PMID: 29699632.
- Elsakka AMA, Bary MA, Abdelzaher E, Elnaggar M, Kalamian M, Mukherjee P, Seyfried TN. Management of Glioblastoma Multiforme in a Patient Treated With Ketogenic Metabolic Therapy and Modified Standard of Care: A 24-Month Follow-Up. *Front Nutr*. 2018 Mar 29;5:20. doi: 10.3389/fnut.2018.00020. eCollection 2018. PubMed PMID: 29651419; PubMed Central PMCID: PMC5884883.

Inhibitor · Natural Compounds · Compound Libraries · Recombinant Proteins

This product is for Research Use Only · Not for Human or Veterinary or Therapeutic Use

Tel:781-999-4286 E_mail:info@targetmol.com Address:34 Washington Street,Wellesley Hills,MA 02481