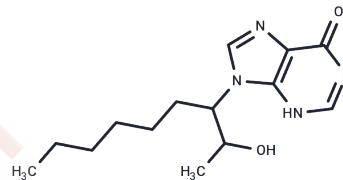


## Nosantine racemate

## Chemical Properties

|                   |   |
|-------------------|---|
| CAS No. :         | 75166-67-5  |
| Formula:          | C <sub>14</sub> H <sub>22</sub> N <sub>4</sub> O <sub>2</sub>   |
| Molecular Weight: | 278.35  |
| Storage:          | Powder: -20°C for 3 years   In solvent: -80°C for 1 year<br>Actual storage temperature shall be subject to the COA. |



## Biological Description

|               |   |
|---------------|---|
| Description   | Nosantine racemate, the racemic form of Nosantine, acts as an IL-2 inducer or enhances IL-2 induction by phytohemagglutinin (PHA).    |
| Targets(IC50) | IL Receptor, Interleukin  |
| In vitro      | Nosantine is has significant enhancing activity on PHA induction of IL-2 by human lymphocytes over a wide range of concentrations[1]. |

## Preparing Stock Solutions

|       | 1mg       | 5mg       | 10mg      |
|-------|-----------|-----------|-----------|
| 1 mM  | 3.5926 mL | 17.963 mL | 35.926 mL |
| 5 mM  | 0.7185 mL | 3.5926 mL | 7.1852 mL |
| 10 mM | 0.3593 mL | 1.7963 mL | 3.5926 mL |
| 50 mM | 0.0719 mL | 0.3593 mL | 0.7185 mL |

Please select the appropriate solvent to prepare the stock solution, according to the solubility of the product in different solvents. Please use it as soon as possible.

Note: The dilution table applies only to solid products. For liquid products, please calculate the stock solution based on the stated concentration and/or density.

## Reference

Wiranowska-Stewart M, et al. Effects of isoprinosine and NPT 15392 on interleukin-2 (IL-2) production. Int J Immunopharmacol. 1986;8(1):63-9.

Exon JH, et al. The selectivity of isoprinosine, NPT 15392, avridine and cyclophosphamide on multiple immuneresponses in rats. Int J Immunopharmacol. 1986;8(1):53-62.

**Inhibitor · Natural Compounds · Compound Libraries · Recombinant Proteins**

This product is for Research Use Only · Not for Human or Veterinary or Therapeutic Use

Tel:781-999-4286 E\_mail:info@targetmol.com Address:34 Washington Street,Wellesley Hills,MA 02481