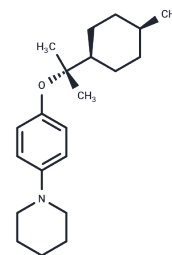


YM 9429

## Chemical Properties

CAS No. : 72056-79-2  
 Formula: C<sub>21</sub>H<sub>33</sub>NO  
 Molecular Weight: 315.49  
 Storage: Powder: -20°C for 3 years | In solvent: -80°C for 1 year  
 Actual storage temperature shall be subject to the COA.



## Biological Description

Description	YM 9429 is a biochemical.
Targets(IC50)	Others

## Preparing Stock Solutions

	1mg	5mg	10mg
1 mM	3.1697 mL	15.8484 mL	31.6967 mL
5 mM	0.6339 mL	3.1697 mL	6.3393 mL
10 mM	0.317 mL	1.5848 mL	3.1697 mL
50 mM	0.0634 mL	0.317 mL	0.6339 mL

Please select the appropriate solvent to prepare the stock solution, according to the solubility of the product in different solvents. Please use it as soon as possible.

Note: The dilution table applies only to solid products. For liquid products, please calculate the stock solution based on the stated concentration and/or density.

## Reference

Numazawa S, Shibata M, Imaoka S, Funae Y, Yoshida T. Induction of hepatic CYP2B1/2 by a teratogenic compound cis-1-[4-(p-menthane-8-yloxy)phenyl]piperadine (YM9429) in rats. J Toxicol Sci. 2000 Feb;25(1):57-61. PubMed PMID: 10736791.

Honda A, Tint GS, Shefer S, Batta AK, Honda M, Salen G. Effect of YM 9429, a potent teratogen, on cholesterol biosynthesis in cultured cells and rat liver microsomes. Steroids. 1996 Sep;61(9):544-8. PubMed PMID: 8883221.

Shibata M, Fujino E, Sato Y, Numazawa S, Yoshida T, Kuroiwa Y. Inhibition of insulin-induced chondrogenic differentiation of embryonic carcinoma cells by a teratogenic compound YM9429. Biochem Biophys Res Commun. 1996 Aug 14;225(2):593-9. PubMed PMID: 8753805.

Shibata M, Watanabe T. In vitro assessment of teratogenic potential of cis-1-[4-(p-menthane-8-yloxy) phenyl] piperidine [corrected]. J Toxicol Sci. 1995 Feb;20(1):9-14. Erratum in: J Toxicol Sci 1996 Aug;21(3):205. PubMed PMID: 7595978.

**Inhibitor · Natural Compounds · Compound Libraries · Recombinant Proteins**

This product is for Research Use Only · Not for Human or Veterinary or Therapeutic Use

Tel:781-999-4286 E\_mail:info@targetmol.com Address:34 Washington Street,Wellesley Hills,MA 02481