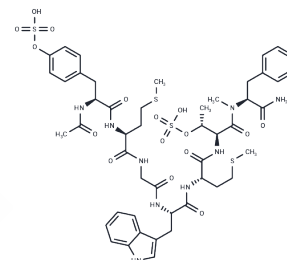


Ro 23-7014

## Chemical Properties

CAS No. : 113714-78-6  
 Formula: C<sub>48</sub>H<sub>63</sub>N<sub>9</sub>O<sub>16</sub>S<sub>4</sub>  
 Molecular Weight: 1150.32  
 Storage: Keep away from moisture  
 Powder: -20°C for 3 years | In solvent: -80°C for 1 year  
 Actual storage temperature shall be subject to the COA.



## Biological Description

|                            |  |
|----------------------------|--|
| Description                | Ro 23-7014, a new thiazepinone Ca <sup>2+</sup> channel antagonist, has high affinity for peripheral (Type A) receptors. |
| Targets(IC <sub>50</sub> ) | Others,Cholecystokinin Receptor  |

## Preparing Stock Solutions

|       | 1mg       | 5mg       | 10mg      |
|-------|-----------|-----------|-----------|
| 1 mM  | 0.8693 mL | 4.3466 mL | 8.6932 mL |
| 5 mM  | 0.1739 mL | 0.8693 mL | 1.7386 mL |
| 10 mM | 0.0869 mL | 0.4347 mL | 0.8693 mL |
| 50 mM | 0.0174 mL | 0.0869 mL | 0.1739 mL |

Please select the appropriate solvent to prepare the stock solution, according to the solubility of the product in different solvents. Please use it as soon as possible.

Note: The dilution table applies only to solid products. For liquid products, please calculate the stock solution based on the stated concentration and/or density.

## Reference

Sordahl LA, Rex KA, Benedict CR. In vivo inhibition of platelet aggregation and occlusive coronary thrombus formation by a new calcium antagonist (R023-6152). J Cardiovasc Pharmacol. 1991 Oct;18(4):504-10. PubMed PMID: 1724526.

Medh JD, Rex KA, Benedict CR, Sordahl LA. In vitro and in vivo effects of R023-6152 on heart mitochondrial calcium and energy metabolism. J Cardiovasc Pharmacol. 1991 Oct;18(4):473-7. PubMed PMID: 1724522.

Folkers HB, van Zwienen JC, Boer P, Kleinbloesem CH, Geyskes GG. Hemodynamic effects of Ro 23-6152 in patients with essential hypertension. Eur J Clin Pharmacol. 1991;41(4):307-11. PubMed PMID: 1804644.

**Inhibitor · Natural Compounds · Compound Libraries · Recombinant Proteins**

This product is for Research Use Only · Not for Human or Veterinary or Therapeutic Use

Tel:781-999-4286 E\_mail:info@targetmol.com Address:34 Washington Street,Wellesley Hills,MA 02481