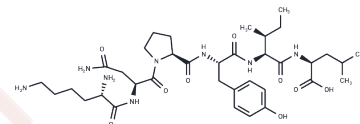


Neurotensin-related hexapeptide

Chemical Properties

CAS No. :	85213-84-9
Formula:	C ₃₆ H ₅₈ N ₈ O ₉
Molecular Weight:	746.89
Storage:	Keep away from moisture Powder: -20°C for 3 years In solvent: -80°C for 1 year <small>Actual storage temperature shall be subject to the COA.</small>



Biological Description

Description	Neurotensin-related hexapeptide exists in retinal ganglion cells and in their central projections in pigeons and may be utilized as a neuroactive substance by the central terminals of numerous retinal ganglion cells in birds.
-------------	---

Preparing Stock Solutions

	1mg	5mg	10mg
1 mM	1.3389 mL	6.6944 mL	13.3889 mL
5 mM	0.2678 mL	1.3389 mL	2.6778 mL
10 mM	0.1339 mL	0.6694 mL	1.3389 mL
50 mM	0.0268 mL	0.1339 mL	0.2678 mL

Please select the appropriate solvent to prepare the stock solution, according to the solubility of the product in different solvents. Please use it as soon as possible.

Note: The dilution table applies only to solid products. For liquid products, please calculate the stock solution based on the stated concentration and/or density.

Reference

- Reiner A. The neurotensin-related hexapeptide LANT6 is found in retinal ganglion cells and in their central projections in pigeons. *Vis Neurosci.* 1992 Sep-Oct;9(3-4):217-23. PubMed PMID: 1390381.
- Tanaka M, Nakao N, Yamamoto I, Tsushima N, Ohta Y. Changes in expression levels of neurotensin precursor and receptor mRNA in chicken intestinal tissues and liver during late embryonic and early posthatching development. *Poult Sci.* 2013 Oct;92(10):2765-71. doi: 10.3382/ps.2012-02939. PubMed PMID: 24046425.
- Masuda K, Iwakoshi-Ukena E, Bessho Y, Taniuchi S, Maejima S, Shikano K, Kondo K, Furumitsu M, Ukena K. Identification of neurotensin and LANT-6 and localization of mRNA encoding their precursor in the chicken brain. *Zool Sci.* 2014 Jun;31(6):353-9. doi: 10.2108/zs140010. PubMed PMID: 24882095.
- Reiner A, Carraway RE. Phylogenetic conservatism in the presence of a neurotensin-related hexapeptide in neurons of globus pallidus. *Brain Res.* 1985 Aug 26;341(2):365-71. PubMed PMID: 3899274.

Inhibitor · Natural Compounds · Compound Libraries · Recombinant Proteins

This product is for Research Use Only · Not for Human or Veterinary or Therapeutic Use

Tel:781-999-4286 E_mail:info@targetmol.com Address:34 Washington Street,Wellesley Hills,MA 02481