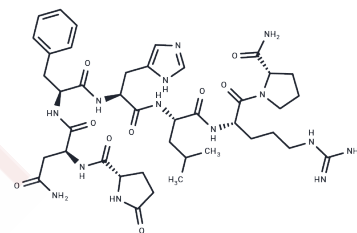


Antho-rpamide II

Chemical Properties

CAS No. :	149471-13-6
Formula:	C41H60N14O9
Molecular Weight:	893
Storage:	Keep away from moisture Powder: -20°C for 3 years In solvent: -80°C for 1 year <small>Actual storage temperature shall be subject to the COA.</small>



Biological Description

Description	Antho-rpamide II is a biologically active neuropeptide isolated from the sea anemone <i>Anthopleura elegantissima</i> .
-------------	---

Preparing Stock Solutions

	1mg	5mg	10mg
1 mM	1.1198 mL	5.5991 mL	11.1982 mL
5 mM	0.224 mL	1.1198 mL	2.2396 mL
10 mM	0.112 mL	0.5599 mL	1.1198 mL
50 mM	0.0224 mL	0.112 mL	0.224 mL

Please select the appropriate solvent to prepare the stock solution, according to the solubility of the product in different solvents. Please use it as soon as possible.

Note: The dilution table applies only to solid products. For liquid products, please calculate the stock solution based on the stated concentration and/or density.

Reference

Carstensen K, McFarlane ID, Rinehart KL, Hudman D, Sun F, Grimmelikhuijzen CJ. Isolation of <Glu-Asn-Phe-His-Leu-Arg-Pro-NH₂ (Antho-RPamide II), a novel, biologically active neuropeptide from sea anemones. *Peptides*. 1993 Mar-Apr;14(2):131-5. PubMed PMID: 8483793.

Inhibitor · Natural Compounds · Compound Libraries · Recombinant Proteins

This product is for Research Use Only · Not for Human or Veterinary or Therapeutic Use

Tel:781-999-4286 E_mail:info@targetmol.com Address:34 Washington Street,Wellesley Hills,MA 02481