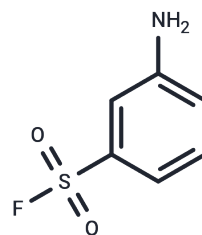


## Metanilyl fluoride hydrochloride

## Chemical Properties

CAS No. :	3887-48-7
Formula:	C <sub>6</sub> H <sub>7</sub> ClFNO <sub>2</sub> S
Molecular Weight:	211.64
Storage:	Powder: -20°C for 3 years   In solvent: -80°C for 1 year Actual storage temperature shall be subject to the COA.

HCl



## Biological Description

Description	Metanilyl fluoride hydrochloride is a protease inhibitor.
Targets(IC50)	Others

## Preparing Stock Solutions

	1mg	5mg	10mg
1 mM	4.725 mL	23.625 mL	47.250 mL
5 mM	0.945 mL	4.725 mL	9.450 mL
10 mM	0.4725 mL	2.3625 mL	4.725 mL
50 mM	0.0945 mL	0.4725 mL	0.945 mL

Please select the appropriate solvent to prepare the stock solution, according to the solubility of the product in different solvents. Please use it as soon as possible.

Note: The dilution table applies only to solid products. For liquid products, please calculate the stock solution based on the stated concentration and/or density.

**Inhibitor · Natural Compounds · Compound Libraries · Recombinant Proteins**

This product is for Research Use Only · Not for Human or Veterinary or Therapeutic Use

Tel:781-999-4286 E\_mail:info@targetmol.com Address:34 Washington Street,Wellesley Hills,MA 02481