

Prothrombin (474-477) [Mus musculus]

Chemical Properties

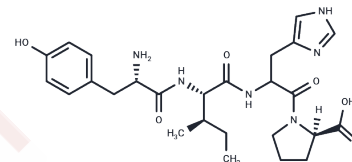
CAS No. :

Formula: C₂₆H₃₆N₆O₆

Molecular Weight: 528.6

Storage: Powder: -20°C for 3 years | In solvent: -80°C for 1 year

Actual storage temperature shall be subject to the COA.



Biological Description

Description	Prothrombin (coagulation factor II) is produced in the liver and is post-translationally modified in a vitamin K-dependent reaction that converts ten glutamic acids on prothrombin into gamma-carboxyglutamic acid. Prothrombin is proteolytically cleaved to form thrombin in the coagulation cascade, which ultimately results in the stemming of blood loss.
Targets(IC50)	Others
In vitro	Activation of prothrombin is crucial in physiological and pathological coagulation. Various rare diseases involving prothrombin have been described (e.g., hypoprothrombinemia). Anti-prothrombin antibodies in autoimmune disease may be a factor in the formation of the lupus anticoagulant, also known as antiphospholipid syndrome. Hyperprothrombinemia can be caused by the G20210A mutation. Thus, manipulation of prothrombin is central to the mode of action of most anticoagulants [1].

Solubility Information

Solubility	DMSO: ≥52.9 mg/mL, Sonication is recommended. (< 1 mg/ml refers to the product slightly soluble or insoluble)
------------	--

Preparing Stock Solutions

	1mg	5mg	10mg
1 mM	1.8918 mL	9.4589 mL	18.9179 mL
5 mM	0.3784 mL	1.8918 mL	3.7836 mL
10 mM	0.1892 mL	0.9459 mL	1.8918 mL
50 mM	0.0378 mL	0.1892 mL	0.3784 mL

Please select the appropriate solvent to prepare the stock solution, according to the solubility of the product in different solvents. Please use it as soon as possible.

Note: The dilution table applies only to solid products. For liquid products, please calculate the stock solution based on the stated concentration and/or density.

Inhibitor · Natural Compounds · Compound Libraries · Recombinant Proteins

This product is for Research Use Only · Not for Human or Veterinary or Therapeutic Use

Tel:781-999-4286 E_mail:info@targetmol.com Address:34 Washington Street,Wellesley Hills,MA 02481