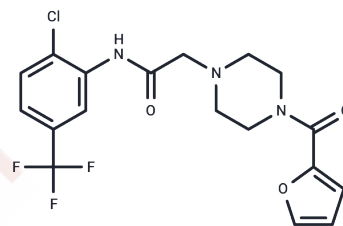


ML348

Chemical Properties

CAS No. : 899713-86-1
 Formula: C₁₈H₁₇ClF₃N₃O₃
 Molecular Weight: 415.79
 Storage: Powder: -20°C for 3 years | In solvent: -80°C for 1 year
Actual storage temperature shall be subject to the COA.



Biological Description

Description	ML348 (GNF-Pf-1127) is a selective, reversible inhibitor of lysophospholipase 1 (LYPLA1) with an IC ₅₀ of 210 nM.
Targets(IC ₅₀)	Phospholipase

Solubility Information

Solubility	DMSO: 83.33 mg/mL (200.41 mM), Sonication is recommended. (< 1 mg/ml refers to the product slightly soluble or insoluble)
In vivo Formulation	10% DMSO+90% Corn Oil: 3.3 mg/mL (7.94 mM), Sonication is recommended. <i>Please add the solvents sequentially, clarifying the solution as much as possible before adding the next one. Dissolve by heating and/or sonication if necessary. Working solution is recommended to be prepared and used immediately. The formulation provided above is for reference purposes only. In vivo formulations may vary and should be modified based on specific experimental conditions.</i>

Preparing Stock Solutions

	1mg	5mg	10mg
1 mM	2.4051 mL	12.0253 mL	24.0506 mL
5 mM	0.481 mL	2.4051 mL	4.8101 mL
10 mM	0.2405 mL	1.2025 mL	2.4051 mL
50 mM	0.0481 mL	0.2405 mL	0.481 mL

Please select the appropriate solvent to prepare the stock solution, according to the solubility of the product in different solvents. Please use it as soon as possible.

Note: The dilution table applies only to solid products. For liquid products, please calculate the stock solution based on the stated concentration and/or density.

Reference

Adibekian A, et al. National Center for Biotechnology Information (US); 2010-.2013 Apr 08 [updated 2014 Jan 13].
Fu Y, Qian H, Yang Y, et al. Enhanced imaging of protein-specific palmitoylation with HCR-based cis-membrane multi-FRET. *Talanta*.2023: 124972.

Inhibitor · Natural Compounds · Compound Libraries · Recombinant Proteins

This product is for Research Use Only· Not for Human or Veterinary or Therapeutic Use

Tel:781-999-4286 E_mail:info@targetmol.com Address:34 Washington Street,Wellesley Hills,MA 02481