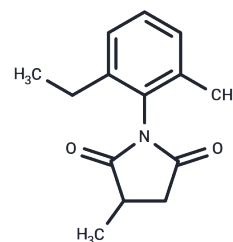


## 1-(2-Ethyl-6-methylphenyl)-3-methylpyrrolidine-2,5-dione

## Chemical Properties

|                   |   |
|-------------------|---|
| CAS No. :         | 883031-45-6   |
| Formula:          | C <sub>14</sub> H <sub>17</sub> NO <sub>2</sub>   |
| Molecular Weight: | 231.29  |
| Storage:          | Powder: -20°C for 3 years   In solvent: -80°C for 1 year<br>Actual storage temperature shall be subject to the COA. |



## Biological Description

|             |   |
|-------------|---|
| Description | 1-(2-Ethyl-6-methylphenyl)-3-methylpyrrolidine-2,5-dione, with CAS No. 883031-45-6, is a fragment molecule that serves as an important scaffold for molecular linking, expansion, and modification. 1-(2-Ethyl-6-methylphenyl)-3-methylpyrrolidine-2,5-dione provides a structural basis and research tool for the design and screening of novel drug candidates, and is commonly used in drug discovery, drug synthesis, and related research. |
|-------------|---|

## Preparing Stock Solutions

|       | 1mg       | 5mg        | 10mg       |
|-------|-----------|------------|------------|
| 1 mM  | 4.3236 mL | 21.6179 mL | 43.2358 mL |
| 5 mM  | 0.8647 mL | 4.3236 mL  | 8.6472 mL  |
| 10 mM | 0.4324 mL | 2.1618 mL  | 4.3236 mL  |
| 50 mM | 0.0865 mL | 0.4324 mL  | 0.8647 mL  |

Please select the appropriate solvent to prepare the stock solution, according to the solubility of the product in different solvents. Please use it as soon as possible.

Note: The dilution table applies only to solid products. For liquid products, please calculate the stock solution based on the stated concentration and/or density.

Inhibitor · Natural Compounds · Compound Libraries · Recombinant Proteins

This product is for Research Use Only · Not for Human or Veterinary or Therapeutic Use

Tel: 781-999-4286 E\_mail: info@targetmol.com Address: 34 Washington Street, Wellesley Hills, MA 02481