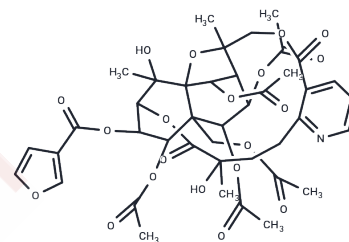


Wilfortrine

Chemical Properties

CAS No. :	37239-48-8
Formula:	C ₄₁ H ₄₇ N ₂ O ₂₀
Molecular Weight:	873.814
Storage:	Powder: -20°C for 3 years In solvent: -80°C for 1 year Actual storage temperature shall be subject to the COA.



Biological Description

Description	Wilfortrine can induce liver cancer cell HepG2 apoptosis, but with no effect on the cell cycle, mainly by promoting Bax expression and inhibiting anti-apoptotic protein Bcl-2 expression.
Targets(IC50)	Bcl-2 Family, HIV Protease
In vitro	We investigated the role of Wilfortrine on liver cancer cell HepG2 apoptosis and analyzed its possible mechanisms to provide a theoretical basis for clinical analysis of liver cancer pathogenesis. The liver cancer cell line HepG2 was treated with 40 mM Wilfortrine for 48 h. Flow cytometry was applied to detect HepG2 cell apoptosis and cell cycle changes. Western blot was used to analyze Bcl-2 and Bax expression. The HepG2 cell apoptosis rate increased significantly after treatment with Wilfortrine, especially the early apoptosis rate (P < 0.05). However, Wilfortrine did not change the cell cycle of HepG2 cells. After Wilfortrine treatment, Bcl- 2 expression decreased significantly (P < 0.05); on the contrary, Bax expression increased noticeably compared with the control group (P < 0.05).

Preparing Stock Solutions

	1mg	5mg	10mg
1 mM	1.1444 mL	5.7221 mL	11.4441 mL
5 mM	0.2289 mL	1.1444 mL	2.2888 mL
10 mM	0.1144 mL	0.5722 mL	1.1444 mL
50 mM	0.0229 mL	0.1144 mL	0.2289 mL

Please select the appropriate solvent to prepare the stock solution, according to the solubility of the product in different solvents. Please use it as soon as possible.

Note: The dilution table applies only to solid products. For liquid products, please calculate the stock solution based on the stated concentration and/or density.

Reference

Effect of wilfortrine on human hepatic cancer HepG2 cell proliferation potential in vitro. Genet Mol Res. 2015 Nov 30;14(4):15349-55.

Inhibitor · Natural Compounds · Compound Libraries · Recombinant Proteins

This product is for Research Use Only · Not for Human or Veterinary or Therapeutic Use

Tel:781-999-4286 E_mail:info@targetmol.com Address:34 Washington Street,Wellesley Hills,MA 02481