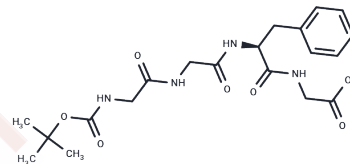


## Boc-Gly-Gly-Phe-Gly-OH

## Chemical Properties

CAS No. :	187794-49-6
Formula:	C <sub>20</sub> H <sub>28</sub> N <sub>4</sub> O <sub>7</sub>
Molecular Weight:	436.46
Storage:	Keep away from moisture Powder: -20°C for 3 years   In solvent: -80°C for 1 year <small>Actual storage temperature shall be subject to the COA.</small>



## Biological Description

Description	Boc-Gly-Gly-Phe-Gly-OH is a self-assembling tetrapeptide with N- and C-protection.
Targets(IC50)	ADC Linker

## Solubility Information

Solubility	H <sub>2</sub> O: Soluble, ( $< 1$ mg/ml refers to the product slightly soluble or insoluble)
------------	--

## Preparing Stock Solutions

	1mg	5mg	10mg
1 mM	2.2912 mL	11.4558 mL	22.9116 mL
5 mM	0.4582 mL	2.2912 mL	4.5823 mL
10 mM	0.2291 mL	1.1456 mL	2.2912 mL
50 mM	0.0458 mL	0.2291 mL	0.4582 mL

Please select the appropriate solvent to prepare the stock solution, according to the solubility of the product in different solvents. Please use it as soon as possible.

Note: The dilution table applies only to solid products. For liquid products, please calculate the stock solution based on the stated concentration and/or density.

Inhibitor · Natural Compounds · Compound Libraries · Recombinant Proteins

This product is for Research Use Only · Not for Human or Veterinary or Therapeutic Use

Tel:781-999-4286 E\_mail:info@targetmol.com Address:34 Washington Street,Wellesley Hills,MA 02481