

MC-Gly-Gly-Phe-Gly

Chemical Properties

CAS No. : 2413428-36-9

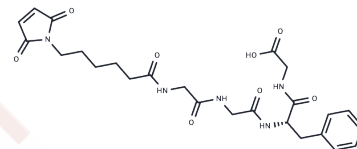
Formula: C₂₅H₃₁N₅O₈

Molecular Weight: 529.54

Keep away from direct sunlight

Storage: Powder: -20°C for 3 years | In solvent: -80°C for 1 year

Actual storage temperature shall be subject to the COA.



Biological Description

Description	MC-Gly-Gly-Phe-Gly (DSN28369) is a heterobifunctional linker, and useful to make antibody drug conjugate (ADC).
Targets(IC50)	ADC Linker,PROTAC Linker

Preparing Stock Solutions

	1mg	5mg	10mg
1 mM	1.8884 mL	9.4422 mL	18.8843 mL
5 mM	0.3777 mL	1.8884 mL	3.7769 mL
10 mM	0.1888 mL	0.9442 mL	1.8884 mL
50 mM	0.0378 mL	0.1888 mL	0.3777 mL

Please select the appropriate solvent to prepare the stock solution, according to the solubility of the product in different solvents. Please use it as soon as possible.

Note: The dilution table applies only to solid products. For liquid products, please calculate the stock solution based on the stated concentration and/or density.

Inhibitor · Natural Compounds · Compound Libraries · Recombinant Proteins

This product is for Research Use Only · Not for Human or Veterinary or Therapeutic Use

Tel:781-999-4286

E_mail:info@targetmol.com

Address:34 Washington Street,Wellesley Hills,MA 02481