

(R)-Citalopram oxalate

Chemical Properties

CAS No. : 219861-53-7

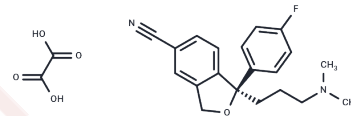
Formula: C₂₂H₂₃FN₂O₅

Molecular Weight: 414.43

Keep away from moisture, Store at low temperature

Storage: Powder: -20°C for 3 years | In solvent: -80°C for 1 year

Actual storage temperature shall be subject to the COA.



Biological Description

Description	(R)-Citalopram oxalate is a weak selective serotonin reuptake inhibitor (SSRI) that antagonises its S-isomer (escitalopram), slightly reducing its inhibition of the serotonin transporter, and exhibits anticonvulsant and antidepressant effects.
Targets(IC50)	Others, 5-HT Receptor, Serotonin Transporter

Solubility Information

Solubility	DMSO: < 1 mg/mL (insoluble), (< 1 mg/ml refers to the product slightly soluble or insoluble)
------------	---

Preparing Stock Solutions

	1mg	5mg	10mg
1 mM	2.413 mL	12.0648 mL	24.1295 mL
5 mM	0.4826 mL	2.413 mL	4.8259 mL
10 mM	0.2413 mL	1.2065 mL	2.413 mL
50 mM	0.0483 mL	0.2413 mL	0.4826 mL

Please select the appropriate solvent to prepare the stock solution, according to the solubility of the product in different solvents. Please use it as soon as possible.

Note: The dilution table applies only to solid products. For liquid products, please calculate the stock solution based on the stated concentration and/or density.

Reference

Signe í Stórustovu, et al. R-citalopram functionally antagonises escitalopram in vivo and in vitro: evidence for kinetic interaction at the serotonin transporter. *Br J Pharmacol*. 2004 May;142(1):172-80.

Connie Sánchez, et al. The pharmacology of citalopram enantiomers: the antagonism by R-citalopram on the effect of S-citalopram. *Basic Clin Pharmacol Toxicol*. 2006 Aug;99(2):91-5.

He, C., Chen, S., Zhang, M. et al. Highly emissive boron-doped g-C₃N₄-glycolchitosan probe with ultralong stability and its application in sensitive nortriptyline monitoring. *J Nanopart Res* 27, 79 (2025).

Chen H,et,al. Efficacy and Safety of Escitalopram Combined with Tansospirone Citrate in Treating Patients with Vascular Depression and Chronic Insomnia: A Randomized Controlled Trial. *CNS Drugs*. 2025 Jul;39(7):669-683.

Inhibitor · Natural Compounds · Compound Libraries · Recombinant Proteins

This product is for Research Use Only· Not for Human or Veterinary or Therapeutic Use

Tel:781-999-4286 E_mail:info@targetmol.com Address:34 Washington Street,Wellesley Hills,MA 02481