

GJH-166

Chemical Properties

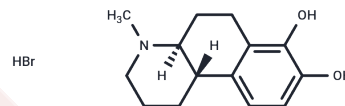
CAS No. : 59424-69-0

Formula: C₁₄H₁₉NO₂

Molecular Weight: 233.31

Storage: Powder: -20°C for 3 years | In solvent: -80°C for 1 year

Actual storage temperature shall be subject to the COA.



Biological Description

Description	GJH-166 is an analog of dopamine that has been shown to inhibit adrenergic transmission in canines.
Targets(IC50)	Others

Preparing Stock Solutions

	1mg	5mg	10mg
1 mM	4.2861 mL	21.4307 mL	42.8614 mL
5 mM	0.8572 mL	4.2861 mL	8.5723 mL
10 mM	0.4286 mL	2.1431 mL	4.2861 mL
50 mM	0.0857 mL	0.4286 mL	0.8572 mL

Please select the appropriate solvent to prepare the stock solution, according to the solubility of the product in different solvents. Please use it as soon as possible.

Note: The dilution table applies only to solid products. For liquid products, please calculate the stock solution based on the stated concentration and/or density.

Inhibitor · Natural Compounds · Compound Libraries · Recombinant Proteins

This product is for Research Use Only · Not for Human or Veterinary or Therapeutic Use

Tel:781-999-4286 E_mail:info@targetmol.com Address:34 Washington Street,Wellesley Hills,MA 02481