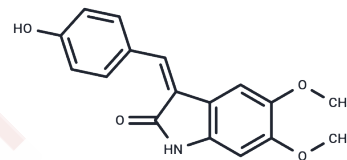


RPI-1

Chemical Properties

CAS No. : 269730-03-2
 Formula: C₁₇H₁₅NO₄
 Molecular Weight: 297.31
 Storage: Powder: -20°C for 3 years | In solvent: -80°C for 1 year
 Actual storage temperature shall be subject to the COA.



Biological Description

Description	RPI-1 is a competitive, potent ATP-dependent Ret kinase inhibitor.
Targets(IC50)	c-RET,c-Met/HGFR,Phospholipase

Solubility Information

Solubility	DMSO: 5.5 mg/mL (18.5 mM),Sonication is recommended. (< 1 mg/ml refers to the product slightly soluble or insoluble)
------------	---

Preparing Stock Solutions

	1mg	5mg	10mg
1 mM	3.3635 mL	16.8175 mL	33.6349 mL
5 mM	0.6727 mL	3.3635 mL	6.727 mL
10 mM	0.3363 mL	1.6817 mL	3.3635 mL
50 mM	0.0673 mL	0.3363 mL	0.6727 mL

Please select the appropriate solvent to prepare the stock solution, according to the solubility of the product in different solvents. Please use it as soon as possible.

Note: The dilution table applies only to solid products. For liquid products, please calculate the stock solution based on the stated concentration and/or density.

Reference

Petrangolini G, et al. Biochem Pharmacol. 2006 Aug 14;72(4):405-14. 2. Caccia D, et al. Mol Y. 2010 Oct 18;9:278.

Inhibitor · Natural Compounds · Compound Libraries · Recombinant Proteins

This product is for Research Use Only · Not for Human or Veterinary or Therapeutic Use

Tel:781-999-4286 E_mail:info@targetmol.com Address:34 Washington Street,Wellesley Hills,MA 02481