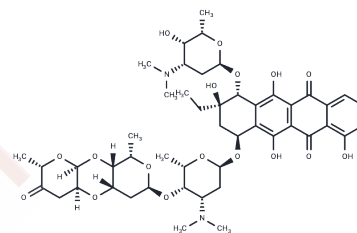


Rodorubicin

Chemical Properties

CAS No. :	96497-67-5
Formula:	C ₄₈ H ₆₄ N ₂ O ₁₇
Molecular Weight:	941.037
Storage:	Powder: -20°C for 3 years In solvent: -80°C for 1 year Actual storage temperature shall be subject to the COA.



Biological Description

Description	Rodorubicin is a novel tetraglycosidic anthracycline with antitumor activity.
Targets(IC50)	Others

Preparing Stock Solutions

	1mg	5mg	10mg
1 mM	1.0627 mL	5.3133 mL	10.6265 mL
5 mM	0.2125 mL	1.0627 mL	2.1253 mL
10 mM	0.1063 mL	0.5313 mL	1.0627 mL
50 mM	0.0213 mL	0.1063 mL	0.2125 mL

Please select the appropriate solvent to prepare the stock solution, according to the solubility of the product in different solvents. Please use it as soon as possible.

Note: The dilution table applies only to solid products. For liquid products, please calculate the stock solution based on the stated concentration and/or density.

Reference

- Kraemer HP, Sedlacek HH. Rodorubicin, a new tetraglycosidic anthracycline. Behring Inst Mitt. 1988 Apr;(82):216-30. PubMed PMID: 3165634.
- Verweij J, van der Burg ME, van Putten WL, Henzen-Logmans SC, Salewski E, Kraemer HP, Stoter G. Phase I studies of rodorubicin single bolus and daily times five, once every three weeks in patients with advanced solid tumors. Eur J Cancer Clin Oncol. 1989 Apr;25(4):627-32. PubMed PMID: 2714339.
- Hermentin P, Doenges R, Gronski P, Bosslet K, Kraemer HP, Hoffmann D, Zilg H, Steinstraesser A, Schwarz A, Kuhlmann L, et al. Attachment of rhodosaminylanthracycline-type anthracyclines to the hinge region of monoclonal antibodies. Bioconjug Chem. 1990 Mar-Apr;1(2):100-7. PubMed PMID: 2095207.
- Iwahashi T, Tone Y, Usui J, Watanabe H, Sugawara I, Mori S, Okazaki H. Selective killing of carcinoembryonic antigen (CEA)-producing cells in vitro by the immunoconjugate cytorhodin-S and CEA-reactive cytorhodin-S antibody CA208. Cancer Immunol Immunother. 1989;30(4):239-46. PubMed PMID: 2598192.

Inhibitor · Natural Compounds · Compound Libraries · Recombinant Proteins

This product is for Research Use Only · Not for Human or Veterinary or Therapeutic Use

Tel:781-999-4286 E_mail:info@targetmol.com Address:34 Washington Street,Wellesley Hills,MA 02481