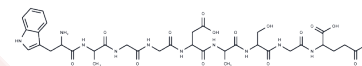


$\delta$ -Sleep Inducing Peptide

## Chemical Properties

|                   |   |
|-------------------|---|
| CAS No. :         | 62568-57-4  |
| Formula:          | C35H48N10O15  |
| Molecular Weight: | 848.81  |
| Storage:          | Keep away from moisture<br>Powder: -20°C for 3 years   In solvent: -80°C for 1 year<br><small>Actual storage temperature shall be subject to the COA.</small> |



## Biological Description

|                 |   |
|-----------------|---|
| Description     | $\delta$ -Sleep Inducing Peptide (DSIP) is a neuropeptide exhibiting antioxidant and anxiolytic properties.   |
| Targets(IC50)   | Others,Antioxidant  |
| In vivo         | Delta-Sleep Inducing Peptide(DSIP) and DSIP-12 significantly (*P<0.05 and **P<0.01) increased in delta and theta frequency bands and decreased the incidence, mean seizure grade and duration of metaphit convulsions. Suggest that DSIP and DSIP-12 may be considered as potential antiepileptics in the animal model[1].  |
| Animal Research | The rats divided in four groups received (i.p.): saline; metaphit; metaphit+DSIP; and metaphit+DSIP-12, respectively. Metaphit-treated animals displaying seizure in eight previous tests received DSIP or DSIP-12 and afterwards audiogenic stimuli were applied at hourly intervals for the next 30 h. The animals were exposed to sound stimulation 60 min after metaphit administration and further on at hourly intervals. Incidence and severity of seizures were behaviorally analyzed. Selected EEGs and power spectra were recorded and analyzed[1]. |

## Solubility Information

|            |   |
|------------|---|
| Solubility | DMSO: 10 mM,Sonication is recommended.<br>(< 1 mg/ml refers to the product slightly soluble or insoluble) |
|------------|---|

### Preparing Stock Solutions

---

|       | 1mg       | 5mg       | 10mg       |
|-------|-----------|-----------|------------|
| 1 mM  | 1.1781 mL | 5.8906 mL | 11.7812 mL |
| 5 mM  | 0.2356 mL | 1.1781 mL | 2.3562 mL  |
| 10 mM | 0.1178 mL | 0.5891 mL | 1.1781 mL  |
| 50 mM | 0.0236 mL | 0.1178 mL | 0.2356 mL  |

---

Please select the appropriate solvent to prepare the stock solution, according to the solubility of the product in different solvents. Please use it as soon as possible.

Note: The dilution table applies only to solid products. For liquid products, please calculate the stock solution based on the stated concentration and/or density.

### Reference

Stanojlovi O P , Ivanovi D P , Mirkovi S D , et al. Antiepileptic activity of delta sleep-inducing peptide and its analogue in metaphit-provoked seizures in rats[J]. Seizure European Journal of Epilepsy, 2005, 14(4):0-247.  
Monnier M , Dudler L , G?chter R , et al. The delta sleep inducing peptide (DSIP). Comparative properties of the original and synthetic nonapeptide[J]. 1977, 33(4):548-552.

**Inhibitor · Natural Compounds · Compound Libraries · Recombinant Proteins**

This product is for Research Use Only· Not for Human or Veterinary or Therapeutic Use

Tel:781-999-4286 E\_mail:info@targetmol.com Address:34 Washington Street,Wellesley Hills,MA 02481