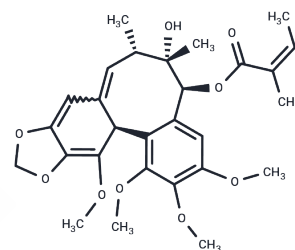


Schisantherin B

Chemical Properties

CAS No. :	58546-55-7
Formula:	C ₂₈ H ₃₄ O ₉
Molecular Weight:	514.56
Storage:	Powder: -20°C for 3 years In solvent: -80°C for 1 year Actual storage temperature shall be subject to the COA.



Biological Description

Description	1. Schisantherin B (Schizanthrin-B) shows good effect in lowering the serum glutamic-pyruvic transaminase level of the patients suffering from chronic virus hepatitis.
Targets(IC50)	Beta Amyloid

Solubility Information

Solubility	DMSO: 50 mg/mL (97.17 mM), Sonication is recommended. (< 1 mg/ml refers to the product slightly soluble or insoluble)
In vivo Formulation	10% DMSO+40% PEG300+5% Tween 80+45% Saline: 2 mg/mL (3.89 mM), Sonication is recommended. <i>Please add the solvents sequentially, clarifying the solution as much as possible before adding the next one. Dissolve by heating and/or sonication if necessary. Working solution is recommended to be prepared and used immediately. The formulation provided above is for reference purposes only. In vivo formulations may vary and should be modified based on specific experimental conditions.</i>

Preparing Stock Solutions

	1mg	5mg	10mg
1 mM	1.9434 mL	9.717 mL	19.4341 mL
5 mM	0.3887 mL	1.9434 mL	3.8868 mL
10 mM	0.1943 mL	0.9717 mL	1.9434 mL
50 mM	0.0389 mL	0.1943 mL	0.3887 mL

Please select the appropriate solvent to prepare the stock solution, according to the solubility of the product in different solvents. Please use it as soon as possible.

Note: The dilution table applies only to solid products. For liquid products, please calculate the stock solution based on the stated concentration and/or density.

Reference

Qin X L , Chen X , Zhong G P , et al. Effect of Tacrolimus on the pharmacokinetics of bioactive lignans of Wuzhi tablet (Schisandra sphenanthera extract) and the potential roles of CYP3A and P-gp[J]. Phytomedicine, 2014, 21(5): 766-772.

Inhibitor · Natural Compounds · Compound Libraries · Recombinant Proteins

This product is for Research Use Only· Not for Human or Veterinary or Therapeutic Use

Tel:781-999-4286 E_mail:info@targetmol.com Address:34 Washington Street,Wellesley Hills,MA 02481