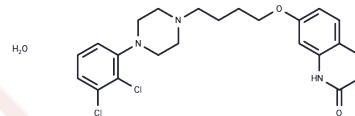


## Aripiprazole monohydrate

## Chemical Properties

CAS No. :	851220-85-4
Formula:	C <sub>23</sub> H <sub>29</sub> Cl <sub>2</sub> N <sub>3</sub> O <sub>3</sub>
Molecular Weight:	466.4
Storage:	Powder: -20°C for 3 years   In solvent: -80°C for 1 year Actual storage temperature shall be subject to the COA.



## Biological Description

Description	Aripiprazole (OPC-14597) monohydrate is an atypical antipsychotic that is a potent, high-affinity partial agonist of the dopamine D2 receptor. Aripiprazole monohydrate is an inverse agonist of the 5-HT <sub>2B</sub> and 5-HT <sub>2A</sub> receptors, and is active on 5-HT <sub>1A</sub> , 5-HT <sub>2C</sub> , D <sub>3</sub> and D <sub>4</sub> . Aripiprazole monohydrate can be used to study schizophrenia and COVID19.
Targets(IC50)	Others, 5-HT Receptor, Dopamine Receptor

## Preparing Stock Solutions

	1mg	5mg	10mg
1 mM	2.1441 mL	10.7204 mL	21.4408 mL
5 mM	0.4288 mL	2.1441 mL	4.2882 mL
10 mM	0.2144 mL	1.072 mL	2.1441 mL
50 mM	0.0429 mL	0.2144 mL	0.4288 mL

Please select the appropriate solvent to prepare the stock solution, according to the solubility of the product in different solvents. Please use it as soon as possible.

Note: The dilution table applies only to solid products. For liquid products, please calculate the stock solution based on the stated concentration and/or density.

Inhibitor · Natural Compounds · Compound Libraries · Recombinant Proteins

This product is for Research Use Only · Not for Human or Veterinary or Therapeutic Use

Tel: 781-999-4286 E\_mail: info@targetmol.com Address: 34 Washington Street, Wellesley Hills, MA 02481