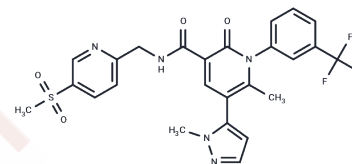


Alvelestat

Chemical Properties

CAS No. :	848141-11-7
Formula:	C ₂₅ H ₂₂ F ₃ N ₅ O ₄ S
Molecular Weight:	545.53
Storage:	Powder: -20°C for 3 years In solvent: -80°C for 1 year Actual storage temperature shall be subject to the COA.



Biological Description

Description	Alvelestat (AZD9668) is an orally bioavailable, selective, and reversible inhibitor of human neutrophil elastase (NE), exhibiting potential anti-inflammatory activity.
Targets(IC50)	Serine Protease
In vitro	In a mouse model of (smoke)-induced airway inflammation, AZD9668 significantly reduced the number of (neutrophils) in the bronchoalveolar lavage (BAL) and the level of BAL IL-1 β . Oral administration of AZD9668 in both mice and rats was able to inhibit (NE)-induced lung injury.
In vivo	In whole blood stimulated by yeast polysaccharide, AZD9668 effectively inhibits NE (NE) activity in the supernatant of antigen-challenged cells and on the surface of stimulated polymorphonuclear cells.

Solubility Information

Solubility	Ethanol: < 1 mg/mL (insoluble or slightly soluble), DMSO: 40 mg/mL (73.32 mM),Sonication is recommended. (< 1 mg/ml refers to the product slightly soluble or insoluble)
In vivo Formulation	10% DMSO+40% PEG300+5% Tween 80+45% Saline: 2 mg/mL (3.67 mM),Sonication is recommended. <i>Please add the solvents sequentially, clarifying the solution as much as possible before adding the next one. Dissolve by heating and/or sonication if necessary. Working solution is recommended to be prepared and used immediately. The formulation provided above is for reference purposes only. In vivo formulations may vary and should be modified based on specific experimental conditions.</i>

Preparing Stock Solutions

	1mg	5mg	10mg
1 mM	1.8331 mL	9.1654 mL	18.3308 mL
5 mM	0.3666 mL	1.8331 mL	3.6662 mL
10 mM	0.1833 mL	0.9165 mL	1.8331 mL
50 mM	0.0367 mL	0.1833 mL	0.3666 mL

Please select the appropriate solvent to prepare the stock solution, according to the solubility of the product in different solvents. Please use it as soon as possible.

Note: The dilution table applies only to solid products. For liquid products, please calculate the stock solution based on the stated concentration and/or density.

Reference

Stevens T, et al. J Pharmacol Exp Ther. 2011, 339(1), 313-320.

Inhibitor · Natural Compounds · Compound Libraries · Recombinant Proteins

This product is for Research Use Only · Not for Human or Veterinary or Therapeutic Use

Tel:781-999-4286 E_mail:info@targetmol.com Address:34 Washington Street,Wellesley Hills,MA 02481