

## R-PEP 27

## Chemical Properties

CAS No. : 103122-78-7

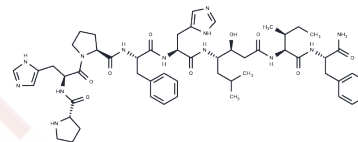
Formula: C54H75N13O9

Molecular Weight: 1050.26

Keep away from moisture

Storage: Powder: -20°C for 3 years | In solvent: -80°C for 1 year

Actual storage temperature shall be subject to the COA.



## Biological Description

Description	R-PEP 27 is an inhibitor of potent renin, decreased plasma angiotensin II, and blood pressure in normal volunteers.
Targets(IC50)	Others

## Preparing Stock Solutions

	1mg	5mg	10mg
1 mM	0.9521 mL	4.7607 mL	9.5215 mL
5 mM	0.1904 mL	0.9521 mL	1.9043 mL
10 mM	0.0952 mL	0.4761 mL	0.9521 mL
50 mM	0.019 mL	0.0952 mL	0.1904 mL

Please select the appropriate solvent to prepare the stock solution, according to the solubility of the product in different solvents. Please use it as soon as possible.

Note: The dilution table applies only to solid products. For liquid products, please calculate the stock solution based on the stated concentration and/or density.

## Reference

Zusman RM, Hui KY, Nussberger J, Christensen DM, Higgins J, Carlson WD, Schoenfeld D, Haber E. R-PEP-27, a potent renin inhibitor, decreases plasma angiotensin II and blood pressure in normal volunteers. *Am J Hypertens.* 1994 Apr;7(4 Pt 1):295-301. PubMed PMID: 8031544.

Hui KY, Knight DR, Nussberger J, Hartley LH, Vatner SF, Haber E. Effects of renin inhibition in the conscious primate *Macaca fascicularis*. *Hypertension.* 1989 Nov;14(5):480-7. PubMed PMID: 2680962.

**Inhibitor · Natural Compounds · Compound Libraries · Recombinant Proteins**

This product is for Research Use Only · Not for Human or Veterinary or Therapeutic Use

Tel:781-999-4286 E\_mail:info@targetmol.com Address:34 Washington Street,Wellesley Hills,MA 02481