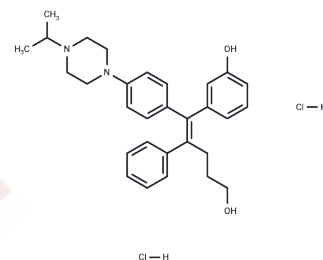


ERRy Inverse Agonist 1

Chemical Properties

CAS No. : 2316832-86-5
 Formula: C₃₀H₃₈Cl₂N₂O₂
 Molecular Weight: 529.54
 Storage: Powder: -20°C for 3 years | In solvent: -80°C for 1 year
 Actual storage temperature shall be subject to the COA.



Biological Description

Description	ERRy Inverse Agonist 1 (Compound 12) is a potent, selective, and orally bioavailable estrogen-related receptor gamma (ERRy) inverse agonist with an IC ₅₀ of 40 nM [1].
Targets(IC ₅₀)	Estrogen Receptor/ERR,Estrogen/progestogen Receptor

Preparing Stock Solutions

	1mg	5mg	10mg
1 mM	1.8884 mL	9.4422 mL	18.8843 mL
5 mM	0.3777 mL	1.8884 mL	3.7769 mL
10 mM	0.1888 mL	0.9442 mL	1.8884 mL
50 mM	0.0378 mL	0.1888 mL	0.3777 mL

Please select the appropriate solvent to prepare the stock solution, according to the solubility of the product in different solvents. Please use it as soon as possible.

Note: The dilution table applies only to solid products. For liquid products, please calculate the stock solution based on the stated concentration and/or density.

Reference

Kim J, et al. Discovery of Potent, Selective, and Orally Bioavailable Estrogen-Related Receptor-γ Inverse Agonists To Restore the Sodium Iodide Symporter Function in Anaplastic Thyroid Cancer. J Med Chem. 2019 Feb 28;62(4): 1837-1858.

Inhibitor · Natural Compounds · Compound Libraries · Recombinant Proteins

This product is for Research Use Only· Not for Human or Veterinary or Therapeutic Use

Tel:781-999-4286 E_mail:info@targetmol.com Address:34 Washington Street,Wellesley Hills,MA 02481