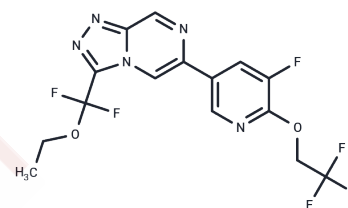


Relutrigine

Chemical Properties

CAS No. :	2392951-29-8
Formula:	C ₁₅ H ₁₁ F ₆ N ₅ O ₂
Molecular Weight:	407.27
Storage:	Store at low temperature Powder: -20°C for 3 years In solvent: -80°C for 1 year <small>Actual storage temperature shall be subject to the COA.</small>



Biological Description

Description	Relutrigine (PRAX-562) is an orally active, long-acting sodium current inhibitor that preferentially suppresses sustained INa induced by TX-II or SCN8A N1768D mutations (IC ₅₀ =141/75 nM). It reduces neuronal intrinsic excitability and may be used for anticonvulsant therapy.
Targets(IC ₅₀)	Sodium Channel
In vitro	Relutrigine (0.001–10,000 μM) inhibits the hNaV1.6 sustained sodium channel with a persistent INa preference. Relutrigine (0.3 μM) significantly reduces intrinsic excitability in wild-type CA1 pyramidal neurons [1].
In vivo	Relutrigine (0.3–40 mg/kg; oral; single dose) dose-dependently protected against maximal electroconvulsive seizure (MES)-induced tonic hindlimb seizures in male CD-1 mice [1].

Solubility Information

Solubility	DMSO: 80 mg/mL (196.43 mM), Sonication is recommended. (< 1 mg/ml refers to the product slightly soluble or insoluble)
------------	---

Preparing Stock Solutions

	1mg	5mg	10mg
1 mM	2.4554 mL	12.2769 mL	24.5537 mL
5 mM	0.4911 mL	2.4554 mL	4.9107 mL
10 mM	0.2455 mL	1.2277 mL	2.4554 mL
50 mM	0.0491 mL	0.2455 mL	0.4911 mL

Please select the appropriate solvent to prepare the stock solution, according to the solubility of the product in different solvents. Please use it as soon as possible.

Note: The dilution table applies only to solid products. For liquid products, please calculate the stock solution based on the stated concentration and/or density.

Reference

Kahlig KM, Scott L, Hatch RJ, et al. The novel persistent sodium current inhibitor PRAX-562 has potent anticonvulsant activity with improved protective index relative to standard of care sodium channel blockers. *Epilepsia*. 2022;63(3):697-708.

Inhibitor · Natural Compounds · Compound Libraries · Recombinant Proteins

This product is for Research Use Only · Not for Human or Veterinary or Therapeutic Use

Tel:781-999-4286 E_mail:info@targetmol.com Address:34 Washington Street,Wellesley Hills,MA 02481