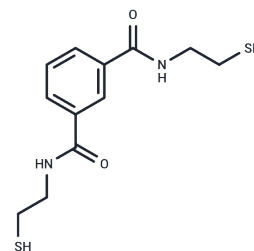


Emeramide

Chemical Properties

CAS No. :	351994-94-0
Formula:	C ₁₂ H ₁₆ N ₂ O ₂ S ₂
Molecular Weight:	284.4
Storage:	Powder: -20°C for 3 years Actual storage temperature shall be subject to the COA.



Biological Description

Description	Emeramide (BDTH2) is a thiol-redox antioxidant. It is also a heavy metal chelator.
Targets(IC50)	Reactive Oxygen Species,Cuproptosis,ROS

Solubility Information

Solubility	H ₂ O: < 0.1 mg/mL (insoluble), DMSO: 100 mg/mL (351.62 mM),Sonication and heating are recommended. (< 1 mg/ml refers to the product slightly soluble or insoluble)
In vivo Formulation	10% DMSO+40% PEG300+5% Tween 80+45% Saline: 4 mg/mL (14.06 mM),Sonication is recommended. <i>Please add the solvents sequentially, clarifying the solution as much as possible before adding the next one. Dissolve by heating and/or sonication if necessary. Working solution is recommended to be prepared and used immediately. The formulation provided above is for reference purposes only. In vivo formulations may vary and should be modified based on specific experimental conditions.</i>

Preparing Stock Solutions

	1mg	5mg	10mg
1 mM	3.5162 mL	17.5809 mL	35.1617 mL
5 mM	0.7032 mL	3.5162 mL	7.0323 mL
10 mM	0.3516 mL	1.7581 mL	3.5162 mL
50 mM	0.0703 mL	0.3516 mL	0.7032 mL

Please select the appropriate solvent to prepare the stock solution, according to the solubility of the product in different solvents. Please use it as soon as possible.

Note: The dilution table applies only to solid products. For liquid products, please calculate the stock solution based on the stated concentration and/or density.

Reference

Secor JD, et al. Novel lipid-soluble thiol-redox antioxidant and heavy metal chelator, N,N'-bis(2-mercaptoethyl) isophthalamide (NBMI) and phospholipase D-specific inhibitor, 5-fluoro-2-indolyl des-chlorohalopemide (FIPI) attenuate mercury-induced lipid signaling leading to protection against cytotoxicity in aortic endothelial cells. Int J Toxicol. 2011 Dec;30(6):619-38.

Inhibitor · Natural Compounds · Compound Libraries · Recombinant Proteins

This product is for Research Use Only · Not for Human or Veterinary or Therapeutic Use

Tel:781-999-4286 E_mail:info@targetmol.com Address:34 Washington Street,Wellesley Hills,MA 02481