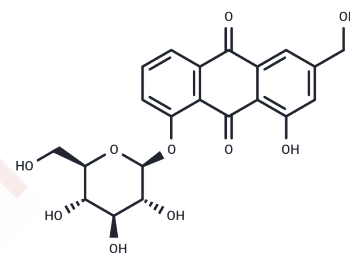


Aloe-emodin-8-O- $\beta$ -D-glucopyranoside

## Chemical Properties

CAS No. : 33037-46-6  
 Formula: C<sub>21</sub>H<sub>20</sub>O<sub>10</sub>  
 Molecular Weight: 432.38  
 Storage: Powder: -20°C for 3 years | In solvent: -80°C for 1 year  
 Actual storage temperature shall be subject to the COA.



## Biological Description

Description	Aloe-emodin-8-O- $\beta$ -D-glucopyranoside (Aloe-emodin-8-O-beta-D-glucopyranoside) exhibits moderate bioactivity against human Protein Tyrosine Phosphatase 1B (hPTP1B) in vitro.
Targets(IC50)	Phosphatase
In vitro	A new lignan glycoside, named 1,5-dihydroxypinoresinol-4'-O-beta-d-glucopyranoside (1), has been isolated from the EtOH extract of the roots of Saussurea lappa, together with twenty known compounds: (+)-1-hydroxypinoresinol-1-O-beta-D-glucopyranoside (2), fraxiresinol-4'-O-beta-D-glucopyranoside (3), (-)-olivil-4''-O-beta-D-glucopyranoside (4), 4-allyl-2,6-dimethoxybenzene-1-O-beta-D-glucopyranoside, syringin, costunolide-15-O-beta-D-glucopyranoside, chlorogenic acid, Aloe-emodin-8-O-beta-D-glucopyranoside (5), rhein-8-O-beta-D-glucopyranoside (6), chrysophanol (7), emodin, dehydrocostus lactone, costunolide, beta-costic acid, reynosin, arbusculin A, alpha-cyclocostunolide, beta-cyclocostunolide, santamarine and magnolialide.

## Solubility Information

Solubility	DMSO: 9 mg/mL (20.82 mM), Sonication is recommended. (< 1 mg/ml refers to the product slightly soluble or insoluble)
------------	---

### Preparing Stock Solutions

---

	<b>1mg</b>	<b>5mg</b>	<b>10mg</b>
1 mM	2.3128 mL	11.5639 mL	23.1278 mL
5 mM	0.4626 mL	2.3128 mL	4.6256 mL
10 mM	0.2313 mL	1.1564 mL	2.3128 mL
50 mM	0.0463 mL	0.2313 mL	0.4626 mL

---

Please select the appropriate solvent to prepare the stock solution, according to the solubility of the product in different solvents. Please use it as soon as possible.

Note: The dilution table applies only to solid products. For liquid products, please calculate the stock solution based on the stated concentration and/or density.

#### Reference

PTP1B inhibitors from *Saussurea lappa*. *J Asian Nat Prod Res.* 2006 Apr-May;8(3):281-6.

**Inhibitor · Natural Compounds · Compound Libraries · Recombinant Proteins**

This product is for Research Use Only · Not for Human or Veterinary or Therapeutic Use

Tel:781-999-4286 E\_mail:info@targetmol.com Address:34 Washington Street,Wellesley Hills,MA 02481