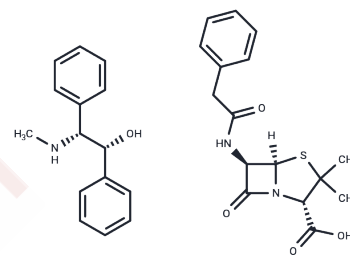


## Ephenamine penicilline

## Chemical Properties

CAS No. :	7177-43-7
Formula:	C <sub>31</sub> H <sub>35</sub> N <sub>3</sub> O <sub>5</sub> S
Molecular Weight:	561.69
Storage:	Powder: -20°C for 3 years   In solvent: -80°C for 1 year Actual storage temperature shall be subject to the COA.



## Biological Description

Description	Ephenamine penicilline is a bioactive chemical.
Targets(IC50)	Others

## Preparing Stock Solutions

	1mg	5mg	10mg
1 mM	1.7803 mL	8.9017 mL	17.8034 mL
5 mM	0.3561 mL	1.7803 mL	3.5607 mL
10 mM	0.178 mL	0.8902 mL	1.7803 mL
50 mM	0.0356 mL	0.178 mL	0.3561 mL

Please select the appropriate solvent to prepare the stock solution, according to the solubility of the product in different solvents. Please use it as soon as possible.

Note: The dilution table applies only to solid products. For liquid products, please calculate the stock solution based on the stated concentration and/or density.

### Reference

Mandal A, Kundu TS, Sengupta P, Ghosh A, Das N. Is This a Drug?" Answers From Medical Students in a Tertiary Care Teaching Hospital in Eastern India. *J Clin Diagn Res.* 2016 Aug;10(8):FC10-3. doi: 10.7860/JCDR/2016/19557.8335. Epub 2016 Aug 1. PubMed PMID: 27656461; PubMed Central PMCID: PMC5028524.

Post JJ, Khor C, Furner V, Smith DE, Whybin LR, Robertson PW. Case report and evaluation of the frequency of the prozone phenomenon in syphilis serology - an infrequent but important laboratory phenomenon. *Sex Health.* 2012 Nov;9(5):488-90. doi: 10.1071/SH11156. PubMed PMID: 22958508.

Pérez-Saad H, Buznego MT. Behavioral and antiepileptic effects of acute administration of the extract of the plant *Cestrum nocturnum* Lin (lady of the night). *Epilepsy Behav.* 2008 Apr;12(3):366-72. doi: 10.1016/j.yebeh.2007.12.012. Epub 2008 Feb 13. PubMed PMID: 18276193.

Buznego MT, Pérez-Saad H. Behavioral and antiepileptic effect of acute administration of the extract of the aquatic plant *Echinodorus berteroi* (Sprengel) Fassett (upright burhead). *Epilepsy Behav.* 2006 Aug;9(1):40-5. Epub 2006 May 18. PubMed PMID: 16713362.

**Inhibitor · Natural Compounds · Compound Libraries · Recombinant Proteins**

This product is for Research Use Only · Not for Human or Veterinary or Therapeutic Use

Tel:781-999-4286 E\_mail:info@targetmol.com Address:34 Washington Street,Wellesley Hills,MA 02481