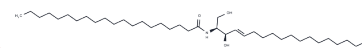


C20 Ceramide

Chemical Properties

CAS No. :	7344-02-7
Formula:	C38H75NO3
Molecular Weight:	594.01
Storage:	Store at low temperature Powder: -20°C for 3 years In solvent: -80°C for 1 year <small>Actual storage temperature shall be subject to the COA.</small>



Biological Description

Description	C20 Ceramide (N-Arachidoyl-D-sphingosine) is a 20:0 ceramide found in the brain that crosses the blood-brain barrier to activate microglia and induce depressive-like behavior.
Targets(IC50)	Endogenous Metabolite

Solubility Information

Solubility	Ethanol: < 1 mg/mL (insoluble) (< 1 mg/ml refers to the product slightly soluble or insoluble)
------------	---

Preparing Stock Solutions

	1mg	5mg	10mg
1 mM	1.6835 mL	8.4174 mL	16.8347 mL
5 mM	0.3367 mL	1.6835 mL	3.3669 mL
10 mM	0.1683 mL	0.8417 mL	1.6835 mL
50 mM	0.0337 mL	0.1683 mL	0.3367 mL

Please select the appropriate solvent to prepare the stock solution, according to the solubility of the product in different solvents. Please use it as soon as possible.

Note: The dilution table applies only to solid products. For liquid products, please calculate the stock solution based on the stated concentration and/or density.

Reference

- Cowart LA. Sphingolipids: players in the pathology of metabolic disease. Trends Endocrinol Metab. 2009 Jan;20(1): 34-42.
- Pewzner-Jung Y, et al. When do Lasses (longevity assurance genes) become CerS (ceramide synthases)? Insights into the regulation of ceramide synthesis. J Biol Chem. 2006 Sep 1;281(35):25001-5.

Inhibitor · Natural Compounds · Compound Libraries · Recombinant Proteins

This product is for Research Use Only · Not for Human or Veterinary or Therapeutic Use

Tel:781-999-4286 E_mail:info@targetmol.com Address:34 Washington Street,Wellesley Hills,MA 02481