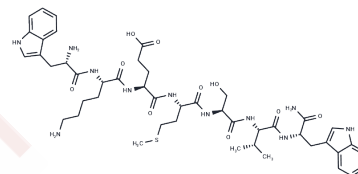


WWamide-1

Chemical Properties

CAS No. :	149665-72-5
Formula:	C ₄₆ H ₆₅ N ₁₁ O ₁₀ S
Molecular Weight:	964.14
Storage:	Keep away from moisture Powder: -20°C for 3 years In solvent: -80°C for 1 year <small>Actual storage temperature shall be subject to the COA.</small>



Biological Description

Description	WWamide-1 is a neuromodulatory peptide isolated from the ganglia of African giant snail, Achatina fulica.
Targets(IC50)	Others

Preparing Stock Solutions

	1mg	5mg	10mg
1 mM	1.0372 mL	5.186 mL	10.3719 mL
5 mM	0.2074 mL	1.0372 mL	2.0744 mL
10 mM	0.1037 mL	0.5186 mL	1.0372 mL
50 mM	0.0207 mL	0.1037 mL	0.2074 mL

Please select the appropriate solvent to prepare the stock solution, according to the solubility of the product in different solvents. Please use it as soon as possible.

Note: The dilution table applies only to solid products. For liquid products, please calculate the stock solution based on the stated concentration and/or density.

Reference

Minakata H, Ikeda T, Muneoka Y, Kobayashi M, Nomoto K. WWamide-1, -2 and -3: novel neuromodulatory peptides isolated from ganglia of the African giant snail, Achatina fulica. FEBS Lett. 1993 May 24;323(1-2):104-8. PubMed PMID: 8495720.

Inhibitor · Natural Compounds · Compound Libraries · Recombinant Proteins

This product is for Research Use Only · Not for Human or Veterinary or Therapeutic Use

Tel: 781-999-4286 E_mail: info@targetmol.com Address: 34 Washington Street, Wellesley Hills, MA 02481