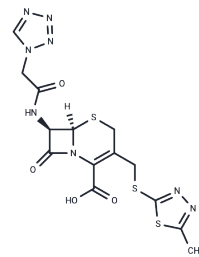


Cefazolin

Chemical Properties

CAS No. :	25953-19-9
Formula:	C ₁₄ H ₁₄ N ₈ O ₄ S ₃
Molecular Weight:	454.51
Storage:	Powder: -20°C for 3 years In solvent: -80°C for 1 year Actual storage temperature shall be subject to the COA.



Biological Description

Description	Cefazolin is a semi-synthetic cephalosporin that has a broad spectrum of antibacterial activity and inhibits the synthesis of bacterial cell walls.
Targets(IC50)	Antibacterial, Antibiotic

Solubility Information

Solubility	DMSO: 250 mg/mL (550.04 mM), Sonication is recommended. (< 1 mg/ml refers to the product slightly soluble or insoluble)
In vivo Formulation	10% DMSO+40% PEG300+5% Tween 80+45% Saline: 3.3 mg/mL (7.26 mM), Sonication is recommended. <i>Please add the solvents sequentially, clarifying the solution as much as possible before adding the next one. Dissolve by heating and/or sonication if necessary. Working solution is recommended to be prepared and used immediately. The formulation provided above is for reference purposes only. In vivo formulations may vary and should be modified based on specific experimental conditions.</i>

Preparing Stock Solutions

	1mg	5mg	10mg
1 mM	2.2002 mL	11.0009 mL	22.0017 mL
5 mM	0.440 mL	2.2002 mL	4.4003 mL
10 mM	0.220 mL	1.1001 mL	2.2002 mL
50 mM	0.044 mL	0.220 mL	0.440 mL

Please select the appropriate solvent to prepare the stock solution, according to the solubility of the product in different solvents. Please use it as soon as possible.

Note: The dilution table applies only to solid products. For liquid products, please calculate the stock solution based on the stated concentration and/or density.

Reference

Gabriela, A, Albarells, et al. Cefazolin pharmacokinetics in cats under surgical conditions.[J]. Journal of Feline Medicine & Surgery, 2017.

Inhibitor · Natural Compounds · Compound Libraries · Recombinant Proteins

This product is for Research Use Only · Not for Human or Veterinary or Therapeutic Use

Tel: 781-999-4286 E_mail: info@targetmol.com Address: 34 Washington Street, Wellesley Hills, MA 02481