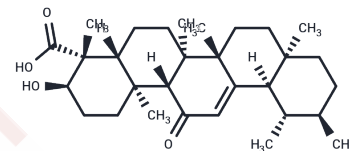


## 11-Keto-beta-boswellic acid

## Chemical Properties

CAS No. :	17019-92-0
Formula:	C <sub>30</sub> H <sub>46</sub> O <sub>4</sub>
Molecular Weight:	470.68
Storage:	Powder: -20°C for 3 years   In solvent: -80°C for 1 year Actual storage temperature shall be subject to the COA.



## Biological Description

Description	11-Keto-beta-boswellic acid, a novel Nrf2 activator, and a selective 5-lipoxygenase (5-LOX) inhibitor; it exerts dose dependent cardioprotective effect manifested by dose-dependent reduction in serum lactate dehydrogenase
Targets(IC50)	NF-κB, Leukotriene Receptor, Lipoxygenase

## Solubility Information

Solubility	DMSO: 22.5 mg/mL (47.8 mM), Sonication is recommended. (< 1 mg/ml refers to the product slightly soluble or insoluble)
In vivo Formulation	10% DMSO+40% PEG300+5% Tween 80+45% Saline: 2 mg/mL (4.25 mM), Sonication is recommended. <i>Please add the solvents sequentially, clarifying the solution as much as possible before adding the next one. Dissolve by heating and/or sonication if necessary. Working solution is recommended to be prepared and used immediately. The formulation provided above is for reference purposes only. In vivo formulations may vary and should be modified based on specific experimental conditions.</i>

## Preparing Stock Solutions

	1mg	5mg	10mg
1 mM	2.1246 mL	10.6229 mL	21.2459 mL
5 mM	0.4249 mL	2.1246 mL	4.2492 mL
10 mM	0.2125 mL	1.0623 mL	2.1246 mL
50 mM	0.0425 mL	0.2125 mL	0.4249 mL

Please select the appropriate solvent to prepare the stock solution, according to the solubility of the product in different solvents. Please use it as soon as possible.

Note: The dilution table applies only to solid products. For liquid products, please calculate the stock solution based on the stated concentration and/or density.

Reference

Biotransformation of 11-keto- $\beta$ -boswellic acid by *Cunninghamella blakesleana*. *Phytochemistry*. 2013 Dec;96:330-6.

**Inhibitor · Natural Compounds · Compound Libraries · Recombinant Proteins**

This product is for Research Use Only · Not for Human or Veterinary or Therapeutic Use

Tel:781-999-4286 E\_mail:info@targetmol.com Address:34 Washington Street,Wellesley Hills,MA 02481