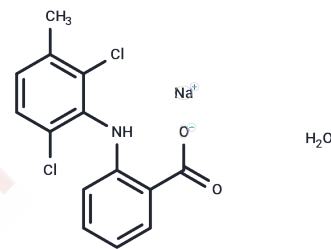


Meclofenamate sodium hydrate

Chemical Properties

CAS No. : 67254-91-5
 Formula: C₁₄H₁₂Cl₂NNaO₃
 Molecular Weight: 336.15
 Storage: Powder: -20°C for 3 years | In solvent: -80°C for 1 year
Actual storage temperature shall be subject to the COA.



Biological Description

Description	Meclofenamate sodium is a potent non-steroidal anti-inflammatory agent, which can specifically inhibit chemokine-induced human polymorphonuclear leukocyte function: chemotaxis, degranulation, and superoxide anion free radical production.
Targets(IC50)	Others,Gap Junction Protein,Endogenous Metabolite,Potassium Channel

Preparing Stock Solutions

	1mg	5mg	10mg
1 mM	2.9749 mL	14.8743 mL	29.7486 mL
5 mM	0.595 mL	2.9749 mL	5.9497 mL
10 mM	0.2975 mL	1.4874 mL	2.9749 mL
50 mM	0.0595 mL	0.2975 mL	0.595 mL

Please select the appropriate solvent to prepare the stock solution, according to the solubility of the product in different solvents. Please use it as soon as possible.

Note: The dilution table applies only to solid products. For liquid products, please calculate the stock solution based on the stated concentration and/or density.

Reference

- Ghosh R, Hwang SM, Cui Z, Gilda JE, Gomes AV. Different effects of the nonsteroidal anti-inflammatory drugs meclofenamate sodium and naproxen sodium on proteasome activity in cardiac cells. *J Mol Cell Cardiol.* 2016 May; 94:131-44. doi: 10.1016/j.yjmcc.2016.03.016. Epub 2016 Apr 3. PubMed PMID: 27049794.
- Hersh EV, Cooper S, Betts N, Wedell D, MacAfee K, Quinn P, Lamp C, Gaston G, Bergman S, Henry E. Single dose and multidose analgesic study of ibuprofen and meclofenamate sodium after third molar surgery. *Oral Surg Oral Med Oral Pathol.* 1993 Dec;76(6):680-7. PubMed PMID: 8284070.
- Reddy MS, Palcanis KG, Barnett ML, Haigh S, Charles CH, Jeffcoat MK. Efficacy of meclofenamate sodium (Meclomen) in the treatment of rapidly progressive periodontitis. *J Clin Periodontol.* 1993 Oct;20(9):635-40. PubMed PMID: 8227450.
- Mongini F, Bona G, Garnero M, Gioria A. Efficacy of meclofenamate sodium versus placebo in headache and craniofacial pain. *Headache.* 1993 Jan;33(1):22-8. PubMed PMID: 8436494.

Inhibitor · Natural Compounds · Compound Libraries · Recombinant Proteins

This product is for Research Use Only · Not for Human or Veterinary or Therapeutic Use

Tel:781-999-4286 E_mail:info@targetmol.com Address:34 Washington Street,Wellesley Hills,MA 02481