

SB-633825

## Chemical Properties

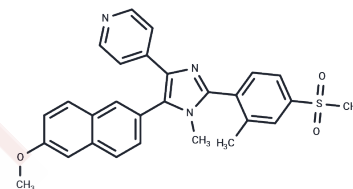
CAS No. : 956613-01-7

Formula: C<sub>28</sub>H<sub>25</sub>N<sub>3</sub>O<sub>3</sub>S

Molecular Weight: 483.58

Storage: Powder: -20°C for 3 years | In solvent: -80°C for 1 year

Actual storage temperature shall be subject to the COA.



## Biological Description

Description	SB-633825 can inhibit cancer cell growth and angiogenesis. SB-633825 is an effective and ATP-competitive inhibitor of TIE2, LOK, and BRK (IC <sub>50</sub> s: 3.5 nM, 66 nM, 150 nM, respectively).
Targets(IC <sub>50</sub> )	BTK,Tie-2
In vitro	SB-633825 (0.1 μM) inhibits LOK to 44% maximal activity and TIE2 to 75% maximal activity. SB-633825 inhibits TIE2 Tyrosine-protein kinase, lymphocyte-oriented kinase (LOK; STK10), and breast tumor kinase (Brk; PTK6) [1].

## Preparing Stock Solutions

	1mg	5mg	10mg
1 mM	2.0679 mL	10.3396 mL	20.6791 mL
5 mM	0.4136 mL	2.0679 mL	4.1358 mL
10 mM	0.2068 mL	1.034 mL	2.0679 mL
50 mM	0.0414 mL	0.2068 mL	0.4136 mL

Please select the appropriate solvent to prepare the stock solution, according to the solubility of the product in different solvents. Please use it as soon as possible.

Note: The dilution table applies only to solid products. For liquid products, please calculate the stock solution based on the stated concentration and/or density.

## Reference

Elkins JM, et al. Comprehensive characterization of the Published Kinase Inhibitor Set. Nat Biotechnol. 2016 Jan;34 (1):95-103.

**Inhibitor · Natural Compounds · Compound Libraries · Recombinant Proteins**

This product is for Research Use Only· Not for Human or Veterinary or Therapeutic Use

Tel:781-999-4286 E\_mail:info@targetmol.com Address:34 Washington Street,Wellesley Hills,MA 02481