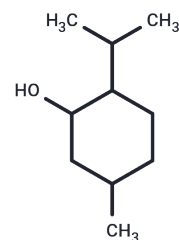


## Menthol

## Chemical Properties

CAS No. :	1490-04-6
Formula:	C <sub>10</sub> H <sub>20</sub> O
Molecular Weight:	156.26
Storage:	Powder: -20°C for 3 years   In solvent: -80°C for 1 year Actual storage temperature shall be subject to the COA.



## Biological Description

Description	Menthol (DL-Menthol) is an organic compound made synthetically or obtained from peppermint or mint oils with flavoring and local anesthetic properties.
Targets(IC50)	Calcium Channel
In vivo	High levels of the major DL-Menthol metabolite, menthol-glucuronide, was observed in the urine of smokers of either menthol or non-menthol cigarettes. The fact that a significant inverse correlation was observed between the levels of urinary menthol-glucuronide and NNAL-N-glucuronide, a major detoxification metabolite of the tobacco carcinogen, NNK, suggests that menthol may be inhibiting the clearance of this important tobacco carcinogen.

## Solubility Information

Solubility	DMSO: 50 mg/mL (319.98 mM), Sonication is recommended. (< 1 mg/ml refers to the product slightly soluble or insoluble)
------------	---

## Preparing Stock Solutions

	1mg	5mg	10mg
1 mM	6.3996 mL	31.998 mL	63.9959 mL
5 mM	1.2799 mL	6.3996 mL	12.7992 mL
10 mM	0.640 mL	3.1998 mL	6.3996 mL
50 mM	0.128 mL	0.640 mL	1.2799 mL

Please select the appropriate solvent to prepare the stock solution, according to the solubility of the product in different solvents. Please use it as soon as possible.

Note: The dilution table applies only to solid products. For liquid products, please calculate the stock solution based on the stated concentration and/or density.

Reference

Kozlovich S, Chen G, Watson CJ, et al. The role of L- and D-menthol in the glucuronidation and detoxification of the major lung carcinogen, NNAL[J]. Drug Metab Dispos. 2019 Oct 2. pii: dmd.119.088351

**Inhibitor · Natural Compounds · Compound Libraries · Recombinant Proteins**

This product is for Research Use Only · Not for Human or Veterinary or Therapeutic Use

Tel: 781-999-4286 E\_mail: info@targetmol.com Address: 34 Washington Street, Wellesley Hills, MA 02481