

L-690488

## Chemical Properties

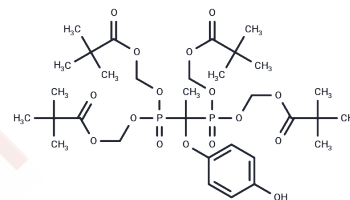
CAS No. : 142523-14-6

Formula: C32H52O16P2

Molecular Weight: 754.69

Storage: Powder: -20°C for 3 years | In solvent: -80°C for 1 year

Actual storage temperature shall be subject to the COA.



## Biological Description

Description	L-690488 has more effective cell penetration than L-690330. L-690488 is a prodrug of L-690330 and is a selective inositol monophosphatase (IMPase) inhibitor.
Targets(IC50)	Others,Phosphatase
In vitro	The effects of L-690488 are studied in cholinergically (carbachol)-stimulated rat cortical slices and Chinese hamster ovary cells stably transfected with the human muscarinic m1 receptor (m1 CHO cells). The EC50 values of L-690488 are 3.7 $\mu$ M in rat cortical slices and 1.0 $\mu$ M in m1 CHO cells. The time course and maximum accumulation of [3H] CMP-PA in L-690488-treated m1 CHO cells is similar to lithium, but L-690488 is much more potent (EC50 values of 3.5 $\mu$ M and 0.52 mM for L-690488 and lithium, respectively). L-690488 attenuates the carbachol-induced elevation of inositol 1,4,5-trisphosphate and inositol 1,3,4,5-tetrakisphosphate in m1 CHO cells, indicating that these effects on the phosphatidylinositol (PI) cycle are due to inositol depletion.

## Preparing Stock Solutions

	1mg	5mg	10mg
1 mM	1.325 mL	6.6252 mL	13.2505 mL
5 mM	0.265 mL	1.325 mL	2.6501 mL
10 mM	0.1325 mL	0.6625 mL	1.325 mL
50 mM	0.0265 mL	0.1325 mL	0.265 mL

Please select the appropriate solvent to prepare the stock solution, according to the solubility of the product in different solvents. Please use it as soon as possible.

Note: The dilution table applies only to solid products. For liquid products, please calculate the stock solution based on the stated concentration and/or density.

Reference

Atack JR, et al. Effects of L-690,488, a prodrug of the bisphosphonate inositol monophosphatase inhibitor L-690,330, on phosphatidylinositol cycle markers. J Pharmacol Exp Ther. 1994 Jul;270(1):70-6.

Chen X, et al. Stimulatory effect of lithium on glucose transport in rat adipocytes is not mediated by elevation of IP1. Am J Physiol. 1998 Aug;275(2):E272-7.

**Inhibitor · Natural Compounds · Compound Libraries · Recombinant Proteins**

This product is for Research Use Only· Not for Human or Veterinary or Therapeutic Use

Tel:781-999-4286 E\_mail:info@targetmol.com Address:34 Washington Street,Wellesley Hills,MA 02481