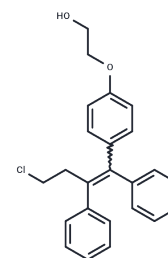


## Ospemifene

## Chemical Properties

CAS No. :	128607-22-7
Formula:	C <sub>24</sub> H <sub>23</sub> ClO <sub>2</sub>
Molecular Weight:	378.89
Storage:	Powder: -20°C for 3 years   In solvent: -80°C for 1 year Actual storage temperature shall be subject to the COA.



## Biological Description

Description	Ospemifene (FC-1271a) is a new selective non-hormonal estrogen receptor modulator (SERM) that is used for the treatment of moderate to severe dyspareunia, a symptom of vulvar and vaginal atrophy, due to menopause. FDA approved on February 26, 2013.
Targets(IC50)	Estrogen Receptor/ERR, Estrogen/progestogen Receptor, Caspase

## Solubility Information

Solubility	H <sub>2</sub> O: < 1 mg/mL (insoluble or slightly soluble), DMSO: 55 mg/mL (145.16 mM), Sonication is recommended. Ethanol: 66 mg/mL (174.19 mM), Sonication is recommended. (< 1 mg/ml refers to the product slightly soluble or insoluble)
In vivo Formulation	10% DMSO+40% PEG300+5% Tween 80+45% Saline: 2 mg/mL (5.28 mM), Sonication is recommended. <i>Please add the solvents sequentially, clarifying the solution as much as possible before adding the next one. Dissolve by heating and/or sonication if necessary. Working solution is recommended to be prepared and used immediately. The formulation provided above is for reference purposes only. In vivo formulations may vary and should be modified based on specific experimental conditions.</i>

## Preparing Stock Solutions

	1mg	5mg	10mg
1 mM	2.6393 mL	13.1964 mL	26.3929 mL
5 mM	0.5279 mL	2.6393 mL	5.2786 mL
10 mM	0.2639 mL	1.3196 mL	2.6393 mL
50 mM	0.0528 mL	0.2639 mL	0.5279 mL

Please select the appropriate solvent to prepare the stock solution, according to the solubility of the product in different solvents. Please use it as soon as possible.

Note: The dilution table applies only to solid products. For liquid products, please calculate the stock solution based on the stated concentration and/or density.

Reference

Constantine GD, Kagan R, Miller PD. Menopause. 2016 Mar 29. [Epub ahead of print]

**Inhibitor · Natural Compounds · Compound Libraries · Recombinant Proteins**

This product is for Research Use Only · Not for Human or Veterinary or Therapeutic Use

Tel: 781-999-4286    E\_mail: [info@targetmol.com](mailto:info@targetmol.com)    Address: 34 Washington Street, Wellesley Hills, MA 02481