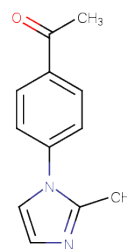


## 1-[4-(2-Methylimidazol-1-yl)phenyl]ethanone

## Chemical Properties

CAS No. :	119924-92-4
Formula:	C <sub>12</sub> H <sub>12</sub> N <sub>2</sub> O
Molecular Weight:	200.2365
Storage:	Powder: -20°C for 3 years   In solvent: -80°C for 1 year Actual storage temperature shall be subject to the COA.



## Biological Description

Description	1-[4-(2-Methylimidazol-1-yl)phenyl]ethanone, with CAS No. 119924-92-4, is a fragment molecule that serves as an important scaffold for molecular linking, expansion, and modification. 1-[4-(2-Methylimidazol-1-yl)phenyl]ethanone provides a structural basis and research tool for the design and screening of novel drug candidates, and is commonly used in drug discovery, drug synthesis, and related research.
-------------	---

## Preparing Stock Solutions

	1mg	5mg	10mg
1 mM	4.994 mL	24.970 mL	49.9401 mL
5 mM	0.9988 mL	4.994 mL	9.988 mL
10 mM	0.4994 mL	2.497 mL	4.994 mL
50 mM	0.0999 mL	0.4994 mL	0.9988 mL

Please select the appropriate solvent to prepare the stock solution, according to the solubility of the product in different solvents. Please use it as soon as possible.

Note: The dilution table applies only to solid products. For liquid products, please calculate the stock solution based on the stated concentration and/or density.

**Inhibitor · Natural Compounds · Compound Libraries · Recombinant Proteins**

This product is for Research Use Only · Not for Human or Veterinary or Therapeutic Use

Tel: 781-999-4286 E\_mail: info@targetmol.com Address: 34 Washington Street, Wellesley Hills, MA 02481