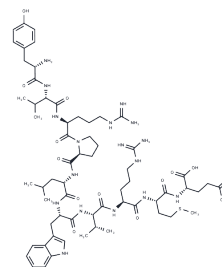


BDC2.5 mimotope 1040-31

Chemical Properties

CAS No. :	329696-49-3
Formula:	C63H97N17O14S
Molecular Weight:	1348.61
Storage:	Keep away from moisture Powder: -20°C for 3 years In solvent: -80°C for 1 year <small>Actual storage temperature shall be subject to the COA.</small>



Biological Description

Description	This is an effectively agonistic peptide (mimotope) for diabetogenic T cell clone BDC2.5. It can stimulate BDC2.5 cells with cells showing good response to this mimotope. 1040-31 peptide is specific for BDC2.5 TCR Tg+ (transgenic) T cells. This peptide is also known as p31.
-------------	--

Preparing Stock Solutions

	1mg	5mg	10mg
1 mM	0.7415 mL	3.7075 mL	7.415 mL
5 mM	0.1483 mL	0.7415 mL	1.483 mL
10 mM	0.0742 mL	0.3708 mL	0.7415 mL
50 mM	0.0148 mL	0.0742 mL	0.1483 mL

Please select the appropriate solvent to prepare the stock solution, according to the solubility of the product in different solvents. Please use it as soon as possible.

Note: The dilution table applies only to solid products. For liquid products, please calculate the stock solution based on the stated concentration and/or density.

Reference

Dai YD, et al. A peptide of glutamic acid decarboxylase 65 can recruit and expand a diabetogenic T cell clone, BDC2.5, in the pancreas. *J Immunol.* 2005 Sep 15;175(6):3621-7.

Inhibitor · Natural Compounds · Compound Libraries · Recombinant Proteins

This product is for Research Use Only · Not for Human or Veterinary or Therapeutic Use

Tel: 781-999-4286 E_mail: info@targetmol.com Address: 34 Washington Street, Wellesley Hills, MA 02481