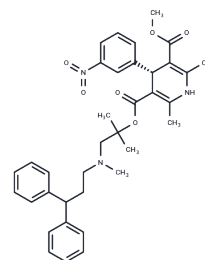


## Lercanidipine. (R)-

## Chemical Properties

CAS No. :	185197-70-0
Formula:	C <sub>36</sub> H <sub>41</sub> N <sub>3</sub> O <sub>6</sub>
Molecular Weight:	611.73
Storage:	Powder: -20°C for 3 years   In solvent: -80°C for 1 year Actual storage temperature shall be subject to the COA.



## Biological Description

Description	Lercanidipine. (R)- is an enantiomer of antihypertensive drugs Lercanidipine. Lercanidipine acts by blocking L-type calcium channels, allowing relaxation and opening of blood vessels.
Targets(IC50)	Others, Calcium Channel

## Preparing Stock Solutions

	1mg	5mg	10mg
1 mM	1.6347 mL	8.1735 mL	16.3471 mL
5 mM	0.3269 mL	1.6347 mL	3.2694 mL
10 mM	0.1635 mL	0.8174 mL	1.6347 mL
50 mM	0.0327 mL	0.1635 mL	0.3269 mL

Please select the appropriate solvent to prepare the stock solution, according to the solubility of the product in different solvents. Please use it as soon as possible.

Note: The dilution table applies only to solid products. For liquid products, please calculate the stock solution based on the stated concentration and/or density.

### Reference

- Egan CG, Pontremoli R. Role of the fixed-dose combination lercanidipine-enalapril in renal protection. *J Nephrol.* 2011 Jul-Aug;24(4):428-37. doi: 10.5301/JN.2011.6271. Review. PubMed PMID: 21279953.
- Kaila HO, Ambasana MA, Thakkar RS, Saravaia HT, Shah AK. A Stability-indicating High Performance Liquid Chromatographic Assay for the Simultaneous Determination of Atenolol and Lercanidipine Hydrochloride in Tablets. *Indian J Pharm Sci.* 2011 Jul;73(4):376-80. doi: 10.4103/0250-474X.95612. PubMed PMID: 22707819; PubMed Central PMCID: PMC3374551.
- Soma MR, Natali M, Donetti E, Baetta R, Farina P, Leonardi A, Comparato C, Barberi L, Catapano AL. Effect of lercanidipine and its (R)-enantiomer on atherosclerotic lesions induced in hypercholesterolemic rabbits. *Br J Pharmacol.* 1998 Dec;125(7):1471-6. PubMed PMID: 9884075; PubMed Central PMCID: PMC1565732.
- Lourenço LP, Aguiar FA, de Oliveira AR, de Gaitani CM. Quantitative determination of lercanidipine enantiomers in commercial formulations by capillary electrophoresis. *J Anal Methods Chem.* 2015;2015:294270. doi: 10.1155/2015/294270. Epub 2015 Mar 2. PubMed PMID: 25821632; PubMed Central PMCID: PMC4363879.

**Inhibitor · Natural Compounds · Compound Libraries · Recombinant Proteins**

This product is for Research Use Only · Not for Human or Veterinary or Therapeutic Use

Tel:781-999-4286 E\_mail:info@targetmol.com Address:34 Washington Street,Wellesley Hills,MA 02481