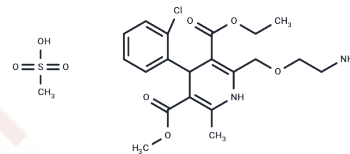


## Amlodipine mesylate

## Chemical Properties

CAS No. :	246852-12-0
Formula:	C <sub>21</sub> H <sub>29</sub> ClN <sub>2</sub> O <sub>8</sub> S
Molecular Weight:	504.98
Storage:	Powder: -20°C for 3 years   In solvent: -80°C for 1 year Actual storage temperature shall be subject to the COA.



## Biological Description

Description	Amlodipine mesylate is an oral active dihydropyridine calcium channel blocker that blocks voltage-dependent L-type calcium channels and inhibits calcium inward flow, and is an anti-anginal agent. amlodipine mesylate can be used to study hypertension and cancer.
Targets(IC50)	Others,Calcium Channel

## Preparing Stock Solutions

	1mg	5mg	10mg
1 mM	1.9803 mL	9.9014 mL	19.8028 mL
5 mM	0.3961 mL	1.9803 mL	3.9606 mL
10 mM	0.198 mL	0.9901 mL	1.9803 mL
50 mM	0.0396 mL	0.198 mL	0.3961 mL

Please select the appropriate solvent to prepare the stock solution, according to the solubility of the product in different solvents. Please use it as soon as possible.

Note: The dilution table applies only to solid products. For liquid products, please calculate the stock solution based on the stated concentration and/or density.

Inhibitor · Natural Compounds · Compound Libraries · Recombinant Proteins

This product is for Research Use Only · Not for Human or Veterinary or Therapeutic Use

Tel:781-999-4286 E\_mail:info@targetmol.com Address:34 Washington Street,Wellesley Hills,MA 02481