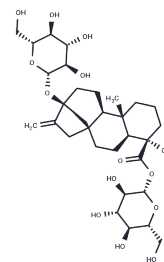


## Rubusoside

## Chemical Properties

CAS No. :	64849-39-4
Formula:	C32H50O13
Molecular Weight:	642.73
Storage:	Powder: -20°C for 3 years   In solvent: -80°C for 1 year Actual storage temperature shall be subject to the COA.



## Biological Description

Description	1. Rubusoside is a natural sweetener . 2. Rubusoside is a solubilizing agent with antiangiogenic and antiallergic properties.
Targets(IC50)	Others,NF-κB,Amylase,transporter

## Solubility Information

Solubility	DMSO: 250 mg/mL (388.97 mM),Sonication is recommended. (< 1 mg/ml refers to the product slightly soluble or insoluble)
In vivo Formulation	10% DMSO+40% PEG300+5% Tween 80+45% Saline: 2 mg/mL (3.11 mM),Sonication is recommended. <i>Please add the solvents sequentially, clarifying the solution as much as possible before adding the next one. Dissolve by heating and/or sonication if necessary. Working solution is recommended to be prepared and used immediately. The formulation provided above is for reference purposes only. In vivo formulations may vary and should be modified based on specific experimental conditions.</i>

## Preparing Stock Solutions

	1mg	5mg	10mg
1 mM	1.5559 mL	7.7793 mL	15.5586 mL
5 mM	0.3112 mL	1.5559 mL	3.1117 mL
10 mM	0.1556 mL	0.7779 mL	1.5559 mL
50 mM	0.0311 mL	0.1556 mL	0.3112 mL

Please select the appropriate solvent to prepare the stock solution, according to the solubility of the product in different solvents. Please use it as soon as possible.

Note: The dilution table applies only to solid products. For liquid products, please calculate the stock solution based on the stated concentration and/or density.

Reference

Zhang F , Koh G Y , Hollingsworth J , et al. Reformulation of etoposide with solubility-enhancing rubusoside[*J*]. International Journal of Pharmaceutics (Kidlington), 2012, 434(1-2):453---459.

**Inhibitor · Natural Compounds · Compound Libraries · Recombinant Proteins**

This product is for Research Use Only· Not for Human or Veterinary or Therapeutic Use

Tel:781-999-4286 E\_mail:info@targetmol.com Address:34 Washington Street,Wellesley Hills,MA 02481