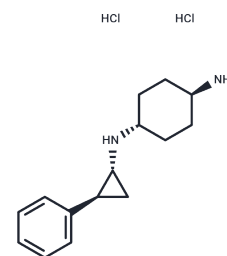


Iadademstat dihydrochloride

Chemical Properties

CAS No. :	1431303-72-8
Formula:	C ₁₅ H ₂₄ Cl ₂ N ₂
Molecular Weight:	303.27
Storage:	Powder: -20°C for 3 years In solvent: -80°C for 1 year Actual storage temperature shall be subject to the COA.



Biological Description

Description	Iadademstat dihydrochloride (ORY-1001(trans)) , a Potent and Selective Covalent KDM1A/LSD1 Inhibitor, for the Treatment of Acute Leukemia.
Targets(IC50)	Histone Demethylase
In vitro	ORY-1001 is a highly potent and selective KDM1A inhibitor that induces H3K4me2 accumulation on KDM1A target genes, blast differentiation, and reduction of leukemic stem cell capacity in AML.
In vivo	ORY-1001 exhibits potent synergy with standard-of-care drugs and selective epigenetic inhibitors, reduces growth of an AML xenograft model, and extends survival in a mouse PDX (patient-derived xenograft) model of T cell acute leukemia. Surrogate pharmacodynamic biomarkers developed based on expression changes in leukemia cell lines were translated to samples from patients treated with ORY-1001. ORY-1001 is a selective KDM1A inhibitor in clinical trials and is currently being evaluated in patients with leukemia and solid tumors.

Solubility Information

Solubility	DMSO: 3.04 mg/mL (10.02 mM),Sonication is recommended. (< 1 mg/ml refers to the product slightly soluble or insoluble)
In vivo Formulation	PBS: 100 mg/mL (329.74 mM) <i>Please add the solvents sequentially, clarifying the solution as much as possible before adding the next one. Dissolve by heating and/or sonication if necessary. Working solution is recommended to be prepared and used immediately. The formulation provided above is for reference purposes only. In vivo formulations may vary and should be modified based on specific experimental conditions.</i>

Preparing Stock Solutions

	1mg	5mg	10mg
1 mM	3.2974 mL	16.487 mL	32.9739 mL
5 mM	0.6595 mL	3.2974 mL	6.5948 mL
10 mM	0.3297 mL	1.6487 mL	3.2974 mL
50 mM	0.0659 mL	0.3297 mL	0.6595 mL

Please select the appropriate solvent to prepare the stock solution, according to the solubility of the product in different solvents. Please use it as soon as possible.

Note: The dilution table applies only to solid products. For liquid products, please calculate the stock solution based on the stated concentration and/or density.

Reference

Maes T , Mascaró, Cristina, Tirapu I , et al. ORY-1001, a Potent and Selective Covalent KDM1A Inhibitor, for the Treatment of Acute Leukemia[J]. Cancer Cell, 2018:S1535610818300230.

Inhibitor · Natural Compounds · Compound Libraries · Recombinant Proteins

This product is for Research Use Only· Not for Human or Veterinary or Therapeutic Use

Tel:781-999-4286 E_mail:info@targetmol.com Address:34 Washington Street,Wellesley Hills,MA 02481