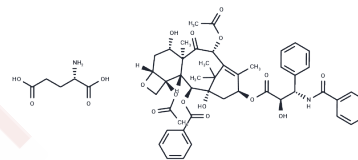


## Paclitaxel Poliglumex

### Chemical Properties

CAS No. : 263351-82-2  
 Formula: C<sub>52</sub>H<sub>60</sub>N<sub>2</sub>O<sub>18</sub>  
 Molecular Weight: 1001.04  
 Storage: Powder: -20°C for 3 years | In solvent: -80°C for 1 year  
*Actual storage temperature shall be subject to the COA.*



### Biological Description

Description	Paclitaxel Poliglumex is cyclohexane isolated from the bark of the Pacific yew tree.
Targets(IC50)	Others

### Solubility Information

Solubility	DMSO: Soluble, ( $< 1$ mg/ml refers to the product slightly soluble or insoluble)
------------	--

### Preparing Stock Solutions

	1mg	5mg	10mg
1 mM	0.999 mL	4.9948 mL	9.9896 mL
5 mM	0.1998 mL	0.999 mL	1.9979 mL
10 mM	0.0999 mL	0.4995 mL	0.999 mL
50 mM	0.020 mL	0.0999 mL	0.1998 mL

Please select the appropriate solvent to prepare the stock solution, according to the solubility of the product in different solvents. Please use it as soon as possible.

Note: The dilution table applies only to solid products. For liquid products, please calculate the stock solution based on the stated concentration and/or density.

### Reference

Markovsky E, Eldar-Boock A, Ben-Shushan D, Baabur-Cohen H, Yeini E, Pisarevsky E, Many A, Aviel-Ronen S, Barshack I, Satchi-Fainaro R. Targeting NCAM-expressing neuroblastoma with polymeric precision nanomedicine. *J Control Release*. 2017 Mar 10;249:162-172. doi: 10.1016/j.jconrel.2017.01.044. Epub 2017 Feb 1. PubMed PMID: 28159518.

Elinzano H, Glantz M, Mrugala M, Kesari S, Piccioni DE, Kim L, Pan E, Yunus S, Coyle T, Timothy K, Evans D, Mantripragada K, Boxerman J, DiPetrillo T, Donahue JE, Hebda N, Mitchell KM, Rosati KL, Safran H. PPX and Concurrent Radiation for Newly Diagnosed Glioblastoma Without MGMT Methylation: A Randomized Phase II Study: BrUOG 244. *Am J Clin Oncol*. 2018 Feb;41(2):159-162. doi: 10.1097/COC.000000000000247. PubMed PMID: 26658237.

Chow W, Amaya CN, Rains S, Chow M, Dickerson EB, Bryan BA. Growth Attenuation of Cutaneous Angiosarcoma With Propranolol-Mediated  $\beta$ -Blockade. *JAMA Dermatol*. 2015 Nov;151(11):1226-9. doi: 10.1001/jamadermatol.2015.2554. PubMed PMID: 26375166.

Boxerman JL, Ellingson BM, Jeyapalan S, Elinzano H, Harris RJ, Rogg JM, Pope WB, Safran H. Longitudinal DSC-MRI for Distinguishing Tumor Recurrence From Pseudoprogression in Patients With a High-grade Glioma. *Am J Clin Oncol*. 2017 Jun;40(3):228-234. doi: 10.1097/COC.000000000000156. PubMed PMID: 25436828.

**Inhibitor · Natural Compounds · Compound Libraries · Recombinant Proteins**

This product is for Research Use Only · Not for Human or Veterinary or Therapeutic Use

Tel:781-999-4286 E\_mail:info@targetmol.com Address:34 Washington Street,Wellesley Hills,MA 02481