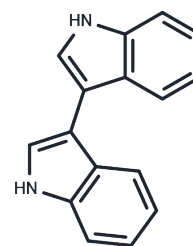


## 3,3'-Bi[1H-indole]

## Chemical Properties

CAS No. :	13637-37-1
Formula:	C <sub>16</sub> H <sub>12</sub> N <sub>2</sub>
Molecular Weight:	232.28
Storage:	Powder: -20°C for 3 years   In solvent: -80°C for 1 year Actual storage temperature shall be subject to the COA.



## Biological Description

Description	3,3'-Bi[1H-indole] (3,3'-Biindole) is a marine derived natural products found in Nocardiosis sp.
Targets(IC50)	Others

## Solubility Information

Solubility	DMSO: 50 mg/mL (215.26 mM),Sonication is recommended. (< 1 mg/ml refers to the product slightly soluble or insoluble)
------------	--

## Preparing Stock Solutions

	1mg	5mg	10mg
1 mM	4.3051 mL	21.5257 mL	43.0515 mL
5 mM	0.861 mL	4.3051 mL	8.6103 mL
10 mM	0.4305 mL	2.1526 mL	4.3051 mL
50 mM	0.0861 mL	0.4305 mL	0.861 mL

Please select the appropriate solvent to prepare the stock solution, according to the solubility of the product in different solvents. Please use it as soon as possible.

Note: The dilution table applies only to solid products. For liquid products, please calculate the stock solution based on the stated concentration and/or density.

## Reference

Bertinetti BV, Rodriguez MA, Godeas AM, Cabrera GM. 1H,1'H-[3,3']biindolyl from the terrestrial fungus Gliocladium catenulatum. J Antibiot (Tokyo). 2010 Nov;63(11):681-3. doi: 10.1038/ja.2010.103. Epub 2010 Sep 8. PMID: 20823893.

**Inhibitor · Natural Compounds · Compound Libraries · Recombinant Proteins**

This product is for Research Use Only · Not for Human or Veterinary or Therapeutic Use

Tel:781-999-4286 E\_mail:info@targetmol.com Address:34 Washington Street,Wellesley Hills,MA 02481