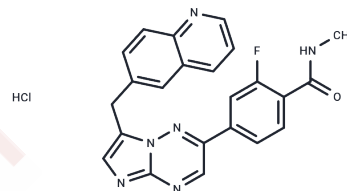


## Capmatinib xHCl

## Chemical Properties

CAS No. :	1029714-89-3
Formula:	C <sub>23</sub> H <sub>18</sub> ClFN <sub>6</sub> O
Molecular Weight:	448.89
Storage:	Powder: -20°C for 3 years   In solvent: -80°C for 1 year Actual storage temperature shall be subject to the COA.



## Biological Description

Description	Capmatinib xHCl (INCB28060) is a potent, orally active, selective, and ATP competitive c-Met kinase inhibitor, potently blocking in vitro kinase activity (IC <sub>50</sub> = 0.13 nM) as well as constitutive or HGF-stimulated activity in cells (IC <sub>50</sub> values range from 0.3 to 1.1 nM).
Targets(IC <sub>50</sub> )	Apoptosis,c-Met/HGFR
In vitro	Capmatinib hydrochloride blocks cell proliferation and migration or induces apoptosis in different types of cancer cells[1]

## Solubility Information

Solubility	DMSO: 4.49 mg/mL (10 mM),Sonication is recommended. (< 1 mg/ml refers to the product slightly soluble or insoluble)
------------	--

## Preparing Stock Solutions

	1mg	5mg	10mg
1 mM	2.2277 mL	11.1386 mL	22.2772 mL
5 mM	0.4455 mL	2.2277 mL	4.4554 mL
10 mM	0.2228 mL	1.1139 mL	2.2277 mL
50 mM	0.0446 mL	0.2228 mL	0.4455 mL

Please select the appropriate solvent to prepare the stock solution, according to the solubility of the product in different solvents. Please use it as soon as possible.

Note: The dilution table applies only to solid products. For liquid products, please calculate the stock solution based on the stated concentration and/or density.

### Reference

Liu X , Wang Q , Yang G , et al. A Novel Kinase Inhibitor, INCB28060, Blocks c-MET-Dependent Signaling, Neoplastic Activities, and Cross-Talk with EGFR and HER-3[J]. Clinical Cancer Research, 2011, 17(22):7127-7138.

Baltschukat S, et al. Capmatinib (INC280) Is Active Against Models of Non-Small Cell Lung Cancer and Other Cancer Types with Defined Mechanisms of MET Activation. Clin Cancer Res. 2019 May 15;25(10):3164-3175.

**Inhibitor · Natural Compounds · Compound Libraries · Recombinant Proteins**

This product is for Research Use Only· Not for Human or Veterinary or Therapeutic Use

Tel:781-999-4286 E\_mail:info@targetmol.com Address:34 Washington Street,Wellesley Hills,MA 02481